



*built the past.....creating the present.....building the future*

# *Inspection Chambers*



# Inspection Chambers

## 4" and 6" Injection Molded Inspection Chambers

- The Inspection Chamber (IC) is designed to reduce maintenance costs due to calls from private property owners claiming Municipal blockage, but have no way of knowing.
- Municipal crews can remove the IC Locking Lid and inspect the chamber. If sewage is present, blockage is on municipal side, if clear, the blockage is on private property.
- For a municipal blockage, access is easy for either flusher trucks or rodder crews to clean from the IC to the sewer main.
- The Inspection Chamber also provides access for inspection in cases of infiltration problems, root build up, or root control and cross connections.
- Allows easy identification of sewer locations.
- The IC comes in a variety of fabricated configurations.
- Pre-plugged ICs allow the complete system to be tested, including the lateral connection. During construction on the property, the plug can remain in the IC, this stops the Municipality from having their mains contaminated during construction(ie, debris, sand etc.).
- The IC plug can remain in the unit until the final inspection and removed after permits and development fees are paid at which time a backflow prevention flap can be installed.
- The initial expense of the IC installation is borne during development. The elimination of a single claim can more than offset the cost of many ICs.

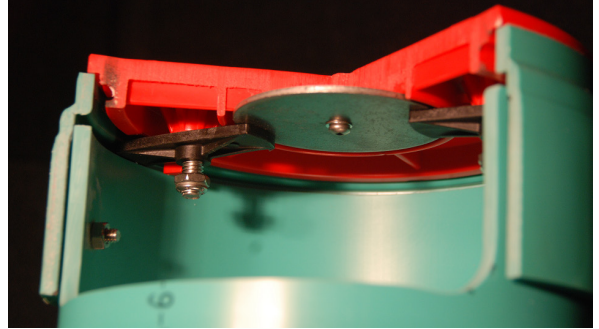


4" Inspection Chamber

\*Pro-Lines 4" & 6" IC's are molded to DR26 heavy wall.

# 4" Inspection Chamber Cut-Away

## Locking Lid and Collar

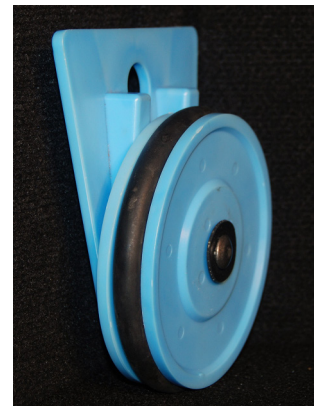


- Pro-Line's Locking Lid keeps lines secure from debris being thrown down the riser and blocking the flow of the Inspection Chamber.
- The Locking Lids are colour coded for storm and sanitary specifications, this allows easy identification of lines.
- Only authorized personnel can access the internals of the Inspection Chamber.
- Locking lids seal with an o-ring gasket and comes with a large flat washer to allow location by a metal detector if buried.

## Backwater Flaps and Plugs

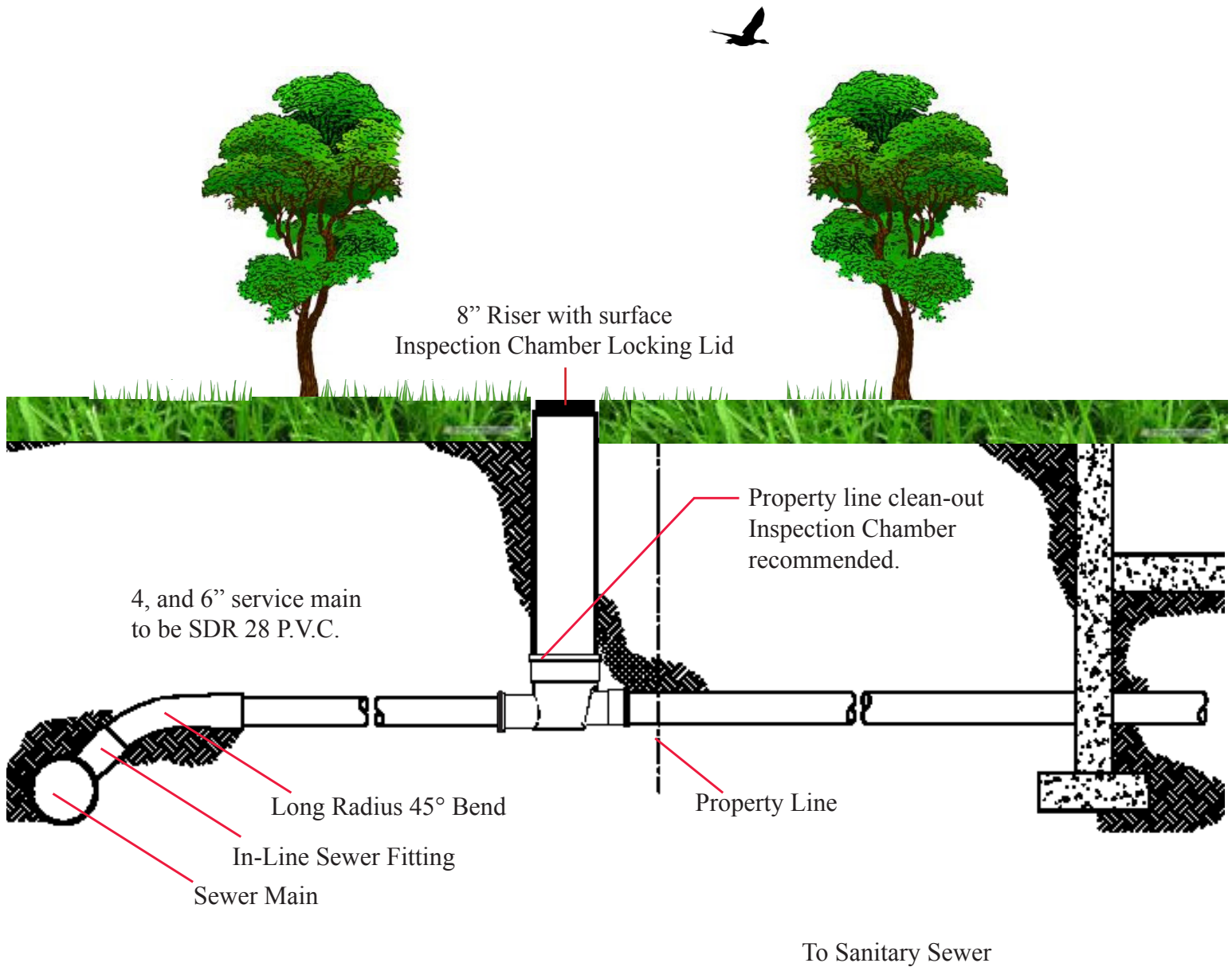


Pro-Line manufactures flaps and plugs for both the 4 and 6" Inspection Chambers.



The PVC Inspection Chamber was developed because of a recognized need for Municipalities to have easy access to their storm and sanitary service lines.

# Inspection Chamber Typical - Installation



T: 604-531-8408 | 1-877-531-8478 F: 604-531-8468 | 1-877-531-8468

[www.pro-linefittings.com](http://www.pro-linefittings.com)