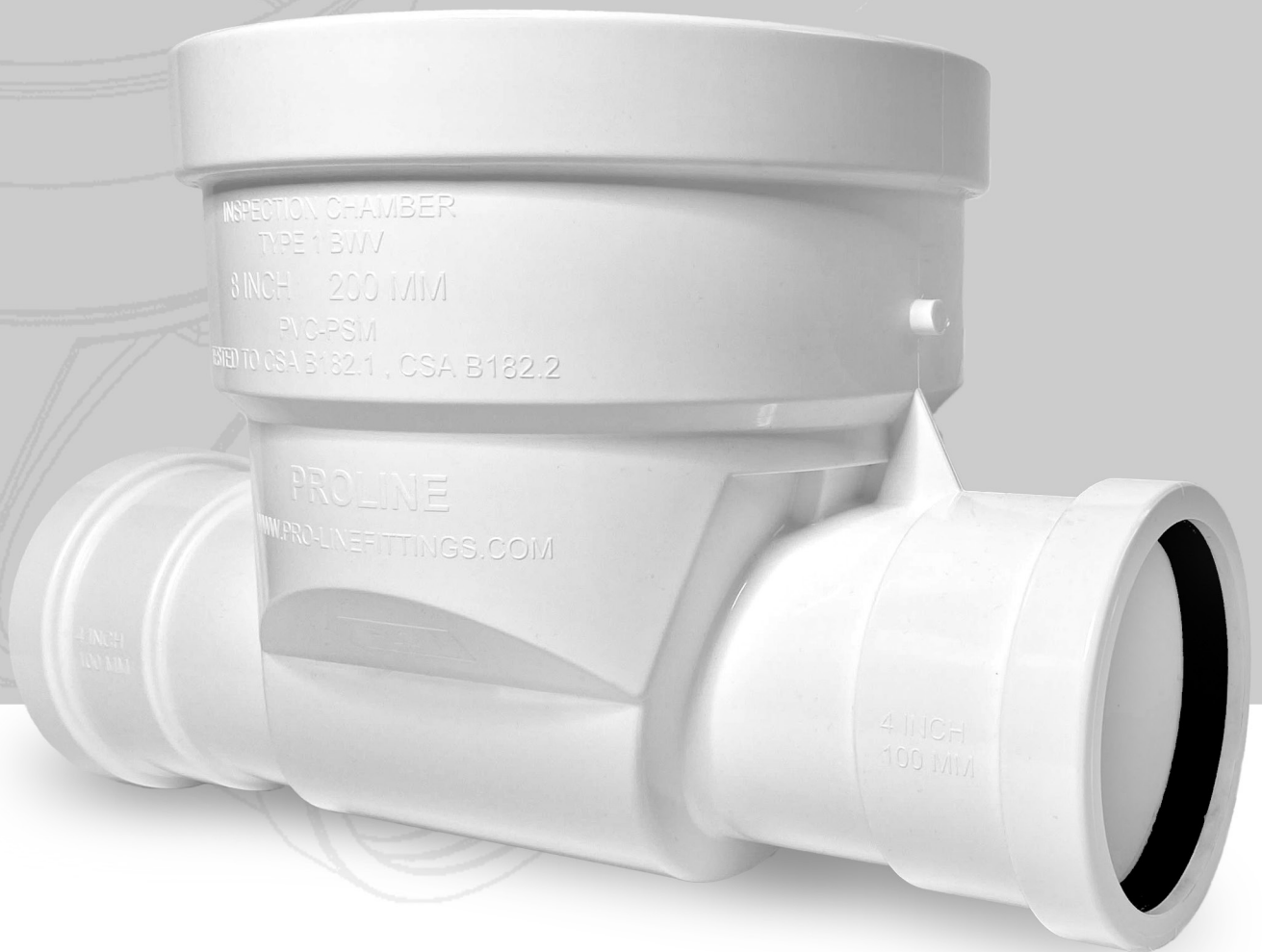


# Inspection Chambers

+ Locking Lids and Accessories



## WESTERN CANADA

12487-82nd Avenue  
Surrey, BC V3W 3E8

T: 604-531-8408 / 1-877-531-8478  
[info@pro-linefittings.com](mailto:info@pro-linefittings.com)

## EASTERN CANADA

740 Huronia Road, Unit #17  
Barrie, ON L4N 6C6

T: 705-733-7720 / 1-855-733-7720  
[sales@pro-linefittings.com](mailto:sales@pro-linefittings.com)

# 4" AND 6" INJECTION MOLDED Inspection Chambers

## WHY INSPECTION CHAMBERS?

- Reduce maintenance cost on calls from property owners claiming municipal blockage
- Allows for a visual inspection and camera insertion
- Quick access
- No need for coordination with homeowners for inspection

*Pro-Line 4" & 6" IC's are molded to DR26 heavy wall*



## RETURN ON INVESTMENT

- Allows easy identification of sewer locations
- For a municipal blockage, access is easy for either flusher trucks or rodder crews to clean from the IC to the sewer main
- The initial expense of the IC installation is borne during development. The elimination of a single claim can more than offset the cost of many ICs

## Flaps & Plugs

Pro-Line manufactures flaps and plugs for both the 4 and 6" Inspection Chambers



# Locking Lid & Collar

## FEATURES & BENEFITS

- Keeps lines secure from debris being thrown down the riser
- Colour coded for storm and sanitary specifications
- Sealed with an o-ring gasket
- Larger flat washer to allow for easy location by a metal detector
- Only authorized personnel can access the internals of the IC



## NEW ALUMINUM LID

For installations and replacement in the field

### WHY ALUMINUM?

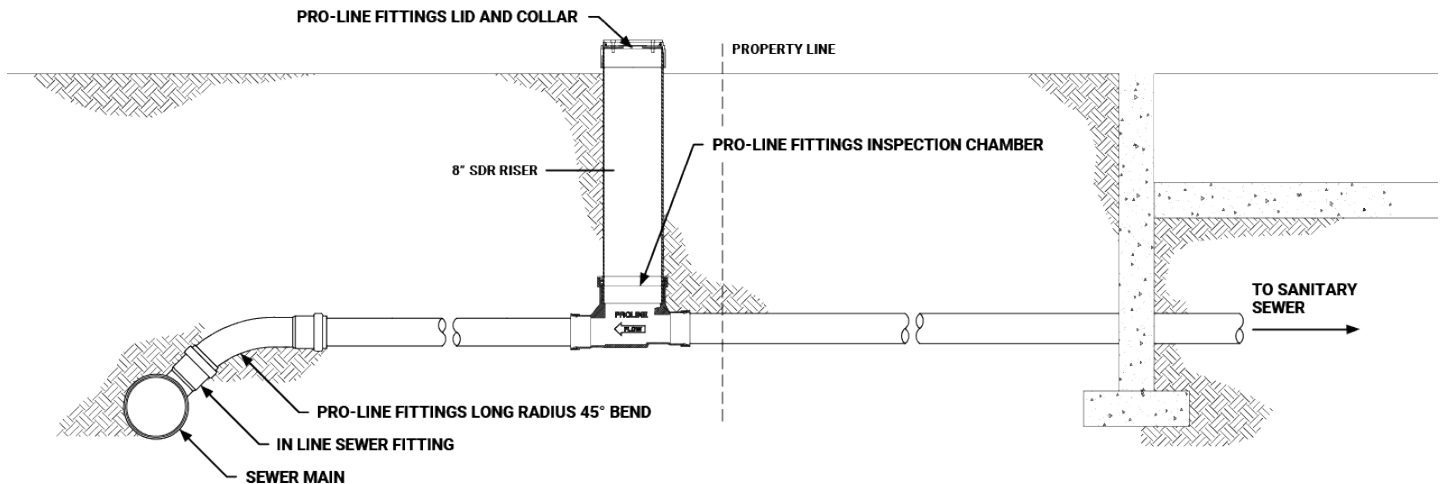
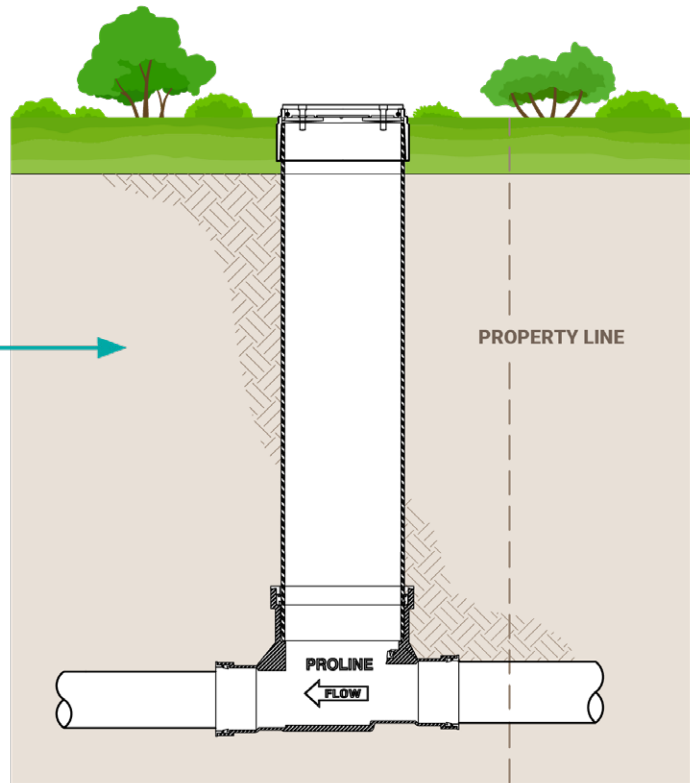
- Designed in co-operation with the City of Surrey Engineering
- Reduces cracking & breaking from direct strikes, lawnmowers, blunt objects or vehicular loading
- Eliminates brittleness due to long term exposure of UV rays
- Powder coating eliminates fading of pigmentation/colouring
- Available in PVC and aluminum
- Custom stamping available



## RETURN ON INVESTMENT FOR CITIES

- Initial cost of IC and installation borne by developer
- Reduces cost of city crews replacing cracked PVC IC lid
- Reduces cost to city for calling out a video truck
- Reduces cost of city crews attending a sewer backup from broken PVC lid
- Save time and money in processing risk management files and payouts

# INSPECTION CHAMBER CUT-AWAY Typical Installation



## WESTERN CANADA

12487-82nd Avenue  
Surrey, BC V3W 3E8

T: 604-531-8408 / 1-877-531-8478  
[info@pro-linefittings.com](mailto:info@pro-linefittings.com)

## EASTERN CANADA

740 Huronia Road, Unit #17  
Barrie, ON L4N 6C6

T: 705-733-7720 / 1-855-733-7720  
[sales@pro-linefittings.com](mailto:sales@pro-linefittings.com)