

PRO-FLARE™

Chemical Piping Systems



WESTERN CANADA

19402 54 Avenue
Surrey, BC V3S 7H9

T: 604-531-8408 / 1-877-531-8478
info@pro-linefittings.com

EASTERN CANADA

740 Huronia Road, Unit #17
Barrie, ON L4N 6C6

T: 705-733-7720 / 1-855-733-7720
sales@pro-linefittings.com

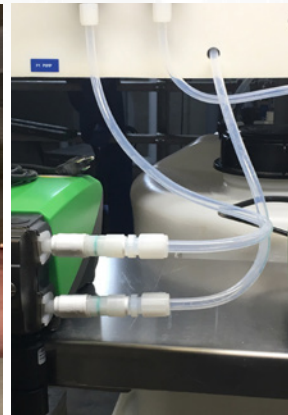


pro-linefittings.com

INDUSTRY STANDARD FINE FLARE THREAD

PRO-FLARE™

Chemical Piping Systems



DESCRIPTION

The Pro-Flare™ fitting line utilizes injection molding and a premium grade of high purity PFA. The product line covers the common range of tubing sizes used in the Chem-Feed industry and a wide array of standard configurations are available from stock for immediate shipment.

APPLICATIONS

Pro-Flare™ Fluoropolymer tube, fittings, valves & pump adaptation is the best choice for chemical resistance, as well as extended temperature and pressure capabilities over traditional plastics such as schedule PVC. Pro-Flare™ offers an ideal solution for many severe chemical applications, including sodium hypochlorite, ferric chloride, alum and others.

FEATURES & BENEFITS

- Molded from virgin premium high purity PFA
- Male Flare and Female Flare
- Large variety of configurations: Tee | Cap | Reducer | Elbow
- Transition fitting to other connection style: NPT connection | Fusion Weld connection
- Nuts available in different types of material to fit your exact need; among the most commonly manufactured: PFA | ETFE | PVDF

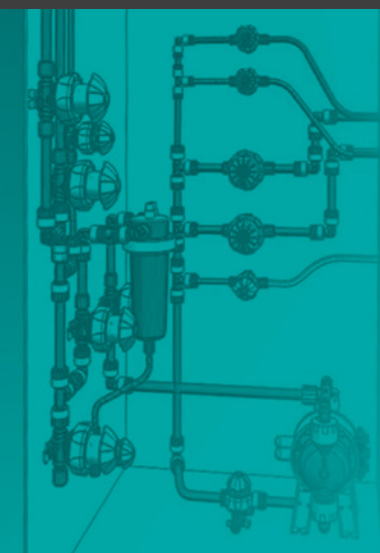
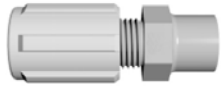


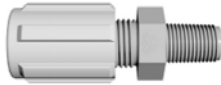
TABLE OF CONTENTS

STRAIGHT FITTING LINE



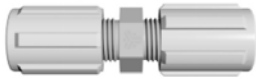
PRO-FLARE X FEMALE NPT ADAPTERS

7



PRO-FLARE X MALE NPT ADAPTERS

8



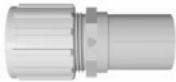
PRO-FLARE COUPLING

9



PRO-FLARE REDUCING COUPLING

9



PRO-FLARE FUSION WELD ADAPTER

10



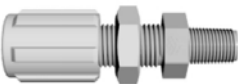
PRO-FLARE TUBE EXTENSION COUPLING

11



PRO-FLARE X FEMALE FLARE ADAPTER

11



PRO-FLARE X MALE NPT PANEL MOUNT ADAPTER

12



PRO-FLARE PANEL MOUNT COUPLING

13



PRO-FLARE REDUCING PANEL MOUNT COUPLING

13

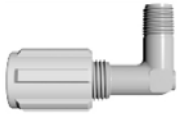


FEMALE FLARE X FUSION WELD ADAPTER

14

TABLE OF CONTENTS

ELBOW & NUT FITTING LINE



MALE NPT 90° ELBOW ADAPTER

15



PRO-FLARE 90° ELBOW

16



PRO-FLARE X FUSION WELD X 90° ELBOW ADAPTER

16



PRO-FLARE X FEMALE NPT 90° ELBOW ADAPTER

17



PRO-FLARE REDUCING 90° ELBOW ADAPTER

18



FUSION WELD X 90° FEMALE FLARE ELBOW

19



PRO-FLARE X FEMALE FLARE 90° ELBOW ADAPTER

20



PVDF | ETFE | PFA NUT

21



PVDF PANEL NUT

22

TABLE OF CONTENTS

TEE FITTING LINE



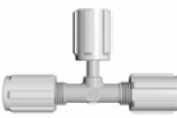
FEMALE FLARE X PRO-FLARE X PRO-FLARE TEE 23



FEMALE FLARE TEE 23



FEMALE FLARE X FEMALE FLARE X PRO-FLARE TEE 24



PRO-FLARE X PRO-FLARE X FEMALE FLARE TEE 24



FEMALE FLARE X PRO-FLARE X FEMALE FLARE TEE 25



FUSION WELD X FEMALE FLARE TEE 25



PRO-FLARE TEE 26



PRO-FLARE REDUCING TEE 27

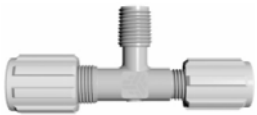
TABLE OF CONTENTS

TEE FITTING LINE



PRO-FLARE X MALE NPT BRANCH TEE

28



MALE NPT BRANCH TEE REDUCER

28



PRO-FLARE X MALE NPT RUN TEE

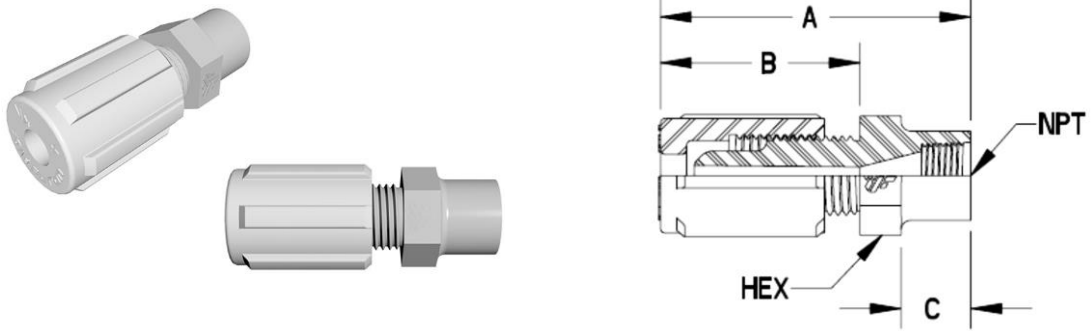
29



FUSION WELD X PRO-FLARE TEE

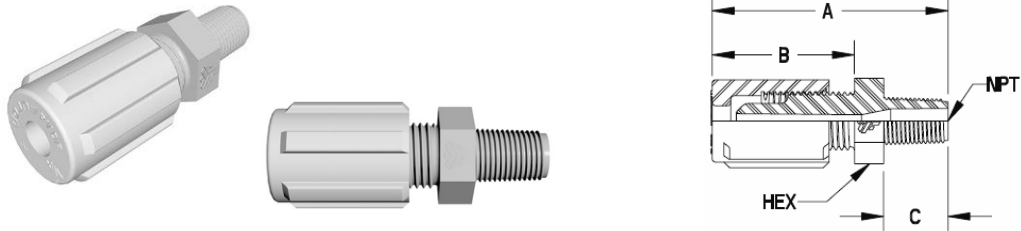
29

PRO-FLARE X FEMALE NPT ADAPTERS

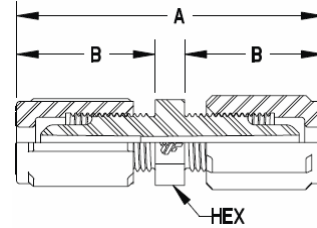
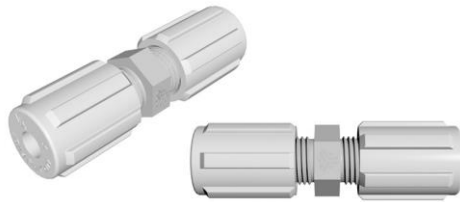


PRO-FLARE X FEMALE NPT ADAPTERS							
Part Number	Tube Size(mm)	Female NPT(in.)	Orifice(mm)	A(mm)	B(mm)	C(mm)	HEX(mm)
PLF42UAFN - 1	1/4" (6.4)	1/8	0.125" (3.18)	1.89" (48.1)	1.22" (30.9)	0.43" (10.8)	0.63" (16.0)
PLF44UAFN - 1	1/4" (6.4)	1/4	0.125" (3.18)	2.05" (52.0)	1.22" (30.9)	0.58" (14.8)	0.94" (23.9)
PLF46UAFN - 1	1/4" (6.4)	3/8	0.125" (3.18)	2.06" (52.2)	1.22" (30.9)	0.59" (14.9)	0.94" (23.9)
PLF48UAFN - 1	1/4" (6.4)	1/2	0.125" (3.18)	2.20" (55.8)	1.22" (30.9)	0.73" (18.5)	0.19" (30.2)
PLF62UAFN - 1	3/8" (9.5)	1/8	0.250" (6.35)	1.99" (50.5)	1.31" (33.4)	0.43" (10.8)	0.63" (16.0)
PLF64UAFN - 1	3/8" (9.5)	1/4	0.250" (6.35)	2.13" (54.1)	1.30" (32.9)	0.58" (14.8)	0.94" (23.9)
PLF66UAFN - 1	3/8" (9.5)	3/8	0.250" (6.35)	2.14" (54.2)	1.30" (32.9)	0.59" (14.9)	0.94" (23.9)
PLF68UAFN - 1	3/8" (9.5)	1/2	0.250" (6.35)	2.28" (57.8)	1.30" (32.9)	0.73" (18.5)	1.25" (31.8)
PLF84UAFN - 1	1/2" (12.7)	1/4	0.375" (9.53)	2.24" (56.9)	1.41" (35.7)	0.58" (14.8)	0.94" (23.9)
PLF86UAFN - 1	1/2" (12.7)	3/8	0.375" (9.53)	2.25" (57.0)	1.41" (35.7)	0.59" (14.9)	0.94" (23.9)
PLF88UAFN - 1	1/2" (12.7)	1/2	0.375" (9.53)	2.43" (61.6)	1.45" (36.8)	0.73" (18.5)	1.13" (28.7)
PLF812UAFN - 1	1/2" (12.7)	3/4	0.375" (9.53)	2.44" (62.0)	1.45" (36.8)	0.74" (18.8)	1.38" (35.1)
PLF816UAFN - 1	1/2" (12.7)	1	0.375" (9.53)	2.59" (65.8)	1.45" (36.8)	0.59" (14.9)	1.19" (30.2)
PLF128UAFN - 1	3/4" (19.1)	1/2	0.625" (15.88)	2.50" (63.6)	1.52" (38.7)	0.73" (18.5)	1.19" (30.2)
PLF1212UAFN - 1	3/4" (19.1)	3/4	0.625" (15.88)	2.53" (64.2)	1.54" (39.0)	0.74" (18.8)	1.38" (35.1)
PLF1216UAFN - 1	3/4" (19.1)	1	0.375" (9.53)	2.68" (68.1)	1.54" (39.0)	0.59" (14.9)	1.63" (41.4)
PLF168UAFN - 1	1" (25.4)	1/2	0.632" (16.05)	2.75" (69.9)	1.77" (45.0)	0.73" (18.5)	1.44" (36.6)
PLF1612UAFN - 1	1" (25.4)	3/4	0.875" (22.23)	2.75" (69.9)	1.77" (45.0)	0.74" (18.8)	1.44" (36.6)
PLF1616UAFN - 1	1" (25.4)	1	0.875" (22.23)	2.75" (69.8)	1.76" (44.6)	0.90" (22.7)	1.63" (41.4)

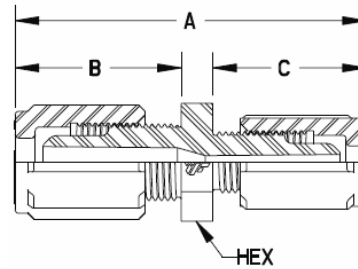
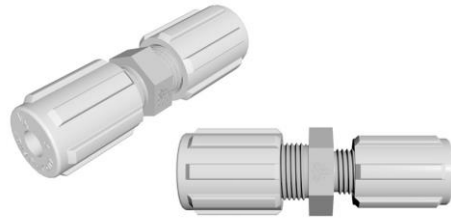
PRO-FLARE X MALE NPT ADAPTERS



PRO-FLARE X MALE NPT ADAPTERS							
Part Number	Tube Size(mm)	Male NPT(mm)	Orifice(mm)	A(mm)	B(mm)	C(mm)	HEX(mm)
PLF42UAMN - 1	1/4" (6.4)	1/8" (3.2)	0.125" (3.18)	2.02" (51.2)	1.22" (30.9)	0.55" (14.0)	0.63" (16.0)
PLF44UAMN - 1	1/4" (6.4)	1/4" (6.4)	0.125" (3.18)	2.02" (51.2)	1.22" (30.9)	0.55" (14.0)	0.63" (16.0)
PLF46UAMN - 1	1/4" (6.4)	3/8" (9.5)	0.125" (3.18)	2.02" (51.2)	1.22" (30.9)	0.55" (14.0)	0.81" (20.6)
PLF48UAMN - 1	1/4" (6.4)	1/2" (12.7)	0.125" (3.18)	2.14" (54.3)	1.22" (30.9)	0.67" (17.0)	0.94" (23.9)
PLF412UAMN - 1	1/4" (6.4)	3/4" (19.1)	0.125" (3.18)	2.14" (54.3)	1.22" (30.9)	0.67" (17.0)	1.19" (30.2)
PLF62UAMN - 1	3/8" (9.5)	1/8" (3.2)	0.215" (5.46)	2.11" (53.7)	1.31" (33.4)	0.55" (14.0)	0.81" (20.6)
PLF64UAMN - 1	3/8" (9.5)	1/4" (6.4)	0.250" (6.35)	2.11" (53.7)	1.31" (33.4)	0.55" (14.0)	0.81" (20.6)
PLF66UAMN - 1	3/8" (9.5)	3/8" (9.5)	0.250" (6.35)	2.11" (53.7)	1.31" (33.4)	0.55" (14.0)	0.81" (20.6)
PLF68UAMN - 1	3/8" (9.5)	1/2" (12.7)	0.250" (6.35)	2.23" (56.7)	1.31" (33.4)	0.67" (17.0)	0.94" (23.9)
PLF612UAMN - 1	3/8" (9.5)	3/4" (19.1)	0.250" (6.35)	2.23" (56.7)	1.31" (33.4)	0.67" (17.0)	1.19" (30.2)
PLF616UAMN - 1	3/8" (9.5)	1" (25.4)	0.250" (6.35)	2.41" (61.3)	1.31" (33.4)	0.85" (21.6)	1.44" (36.6)
PLF82UAMN - 1	1/2" (12.7)	1/8" (3.2)	0.215" (5.46)	2.22" (56.5)	1.42" (36.1)	0.55" (14.0)	0.94" (23.9)
PLF84UAMN - 1	1/2" (12.7)	1/4" (6.4)	0.302" (7.67)	2.22" (56.5)	1.42" (36.1)	0.55" (14.0)	0.94" (23.9)
PLF86UAMN - 1	1/2" (12.7)	3/8" (9.5)	0.375" (9.53)	2.22" (56.5)	1.42" (36.1)	0.55" (14.0)	0.94" (23.9)
PLF88UAMN - 1	1/2" (12.7)	1/2" (12.7)	0.375" (9.53)	2.34" (59.5)	1.42" (36.1)	0.67" (17.0)	0.94" (23.9)
PLF812UAMN - 1	1/2" (12.7)	3/4" (19.1)	0.375" (9.53)	2.34" (59.5)	1.42" (36.1)	0.67" (17.0)	1.19" (30.2)
PLF816UAMN - 1	1/2" (12.7)	1" (25.4)	0.375" (9.53)	2.52" (64.1)	1.42" (36.1)	0.85" (21.6)	1.44" (36.6)
PLF128UAMN - 1	3/4" (19.1)	1/2" (12.7)	0.546" (13.87)	2.44" (62.1)	1.52" (38.7)	0.67" (17.0)	1.19" (30.2)
PLF1212UAMN - 1	3/4" (19.1)	3/4" (19.1)	0.625" (15.88)	2.44" (62.1)	1.52" (38.7)	0.67" (17.0)	1.19" (30.2)
PLF1216UAMN - 1	3/4" (19.1)	1" (25.4)	0.625" (15.88)	2.62" (66.6)	1.52" (38.7)	0.85" (21.6)	1.44" (36.6)
PLF168UAMN - 1	1" (25.4)	1/2" (12.7)	0.546" (13.87)	2.69" (68.4)	1.77" (45.0)	0.67" (17.0)	1.44" (36.6)
PLF1612UAMN - 1	1" (25.4)	3/4" (19.1)	0.742" (18.85)	2.69" (68.4)	1.77" (45.0)	0.67" (17.0)	1.44" (36.6)
PLF1616UAMN - 1	1" (25.4)	1" (25.4)	0.875" (22.23)	2.87" (73.0)	1.77" (45.0)	0.85" (21.6)	1.44" (36.6)

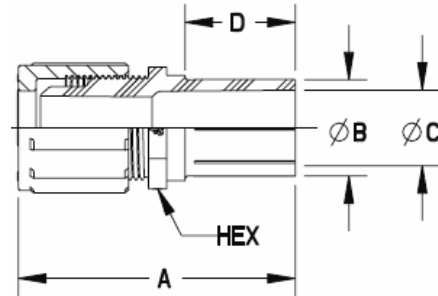


PRO-FLARE COUPLING					
Part Number	Tube Size(mm)	Orifice(mm)	A(mm)	B(mm)	HEX(mm)
PLF4SUN - 1	1/4" (6.4)	0.125" (3.18)	2.68" (68.2)	1.22" (30.9)	0.63" (16.0)
PLF6SUN - 1	3/8" (9.5)	0.250" (6.35)	2.88" (73.1)	1.31" (33.4)	0.81" (20.6)
PLF8SUN - 1	1/2" (12.7)	0.375" (9.53)	3.10" (78.6)	1.42" (36.1)	0.94" (23.9)
PLF12SUN - 1	3/4" (19.1)	0.625" (15.88)	3.30" (83.7)	1.52" (38.7)	0.19" (30.2)
PLF16SUN - 1	1" (25.4)	0.875" (22.23)	2.78" (70.7)	1.27" (32.2)	1.44" (36.6)



PRO-FLARE REDUCING COUPLING							
Part Number	Tube Size(mm)	Tube Size(mm)	Orifice(mm)	A(mm)	B(mm)	C(mm)	HEX(mm)
PLF64SURN - 1	3/8" (9.5)	1/4" (6.4)	0.125" (3.18)	2.78" (70.6)	1.31" (33.4)	1.22" (30.9)	0.81" (20.6)
PLF84SURN - 1	1/2" (12.7)	1/4" (6.4)	0.125" (3.18)	2.89" (73.4)	1.42" (36.1)	1.22" (30.9)	0.94" (23.9)
PLF86SURN - 1	1/2" (12.7)	3/8" (9.5)	0.250" (6.35)	2.99" (75.8)	1.42" (36.1)	1.31" (33.4)	0.94" (23.9)
PLF124SURN - 1	3/4" (19.1)	1/4" (6.4)	0.125" (3.18)	2.99" (75.8)	1.52" (38.7)	1.22" (30.9)	0.19" (30.2)
PLF126SURN - 1	3/4" (19.1)	3/8" (9.5)	0.250" (6.35)	3.09" (78.4)	1.52" (38.7)	1.31" (33.4)	0.19" (30.2)
PLF128SURN - 1	3/4" (19.1)	1/2" (12.7)	0.375" (9.53)	3.20" (81.2)	1.52" (38.7)	1.42" (36.1)	0.19" (30.2)
PLF168SURN - 1	1" (25.4)	1/2" (12.7)	0.375" (9.53)	3.45" (87.5)	1.77" (45.0)	1.42" (36.1)	1.44" (36.6)
PLF1612SURN - 1	1" (25.4)	3/4" (19.1)	0.625" (15.88)	3.55" (90.1)	1.77" (45.0)	1.52" (38.7)	1.44" (36.6)

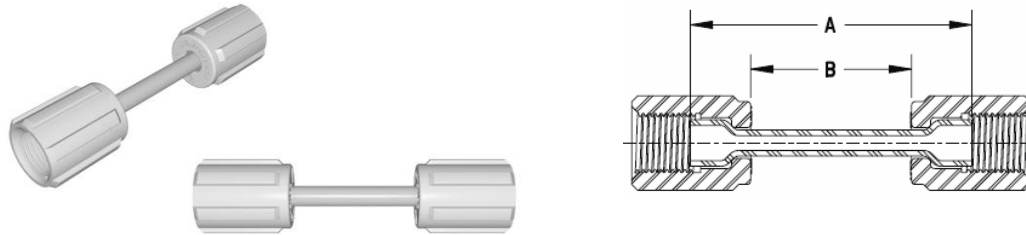
PRO-FLARE X FUSION WELD ADAPTER



PRO-FLARE X FUSION WELD ADAPTER								
Part Number	Tube Size(mm)	Pipe Size(mm)	Orifice(mm)	A(mm)	ØB(mm)	ØC(mm)	D(mm)	HEX(mm)
PFFW-4F4N - 1	1/4" (6.4)	1/4" (6.4)	0.125" (3.18)	2.22" (56.3)	0.540" (13.72)	0.354" (8.99)	0.50" (12.7)	0.68" (17.3)
PFFW-4F8N - 1	1/4" (6.4)	1/2" (12.7)	0.125" (3.18)	3.22" (81.7)	0.840" (21.34)	0.607" (15.42)	1.50" (38.1)	0.94" (23.9)
PFFW-4F12N - 1	1/4" (6.4)	3/4" (19.1)	0.125" (3.18)	3.22" (81.7)	1.050" (26.67)	0.809" (20.55)	1.50" (38.1)	1.18" (30.0)
PFFW-6F4N - 1	3/8" (9.5)	1/4" (6.4)	0.250" (6.35)	2.31" (58.7)	0.540" (13.72)	0.354" (8.99)	0.50" (12.7)	0.81" (20.6)
PFFW-6F8N - 1	3/8" (9.5)	1/2" (12.7)	0.250" (6.35)	3.31" (84.1)	0.840" (21.34)	0.607" (15.42)	1.50" (38.1)	0.94" (23.9)
PFFW-6F12N - 1	3/8" (9.5)	3/4" (19.1)	0.250" (6.35)	3.31" (84.1)	1.050" (26.67)	0.809" (20.55)	1.50" (38.1)	1.18" (30.0)
PFFW-8F8N - 1	1/2" (12.7)	1/2" (12.7)	0.375" (9.53)	3.42" (86.9)	0.840" (21.34)	0.607" (15.42)	1.53" (38.9)	0.94" (23.9)
PFFW-8F12N - 1	1/2" (12.7)	3/4" (19.1)	0.375" (9.53)	3.42" (86.9)	1.050" (26.67)	0.809" (20.55)	1.50" (38.1)	1.18" (30.0)
PFFW-8F16N - 1	1/2" (12.7)	1" (25.4)	0.375" (9.53)	3.42" (86.9)	1.315" (33.40)	1.034" (26.26)	1.50" (38.1)	1.44" (36.6)
PFFW-12F8N - 1	3/4" (19.1)	1/2" (12.7)	0.625" (15.88)	3.52" (89.5)	0.840" (21.34)	0.607" (15.42)	1.53" (38.9)	1.18" (30.0)
PFFW-12F12N - 1	3/4" (19.1)	3/4" (19.1)	0.625" (15.88)	3.52" (89.5)	1.050" (26.67)	0.809" (20.55)	1.50" (38.1)	1.18" (30.0)
PFFW-12F16N - 1	3/4" (19.1)	1" (25.4)	0.625" (15.88)	3.52" (89.5)	1.315" (33.40)	1.034" (26.26)	1.50" (38.1)	1.44" (36.6)
PFFW-16F8N - 1	1" (25.4)	1/2" (12.7)	0.875" (22.23)	3.77" (95.8)	0.840" (21.34)	0.607" (15.42)	1.50" (38.1)	1.44" (36.6)
PFFW-16F12N - 1	1" (25.4)	3/4" (19.1)	0.875" (22.23)	3.77" (95.8)	1.050" (26.67)	0.809" (20.55)	1.50" (38.1)	1.44" (36.6)
PFFW-16F16N - 1	1" (25.4)	1" (25.4)	0.875" (22.23)	3.77" (95.8)	1.315" (33.40)	1.034" (26.26)	1.50" (38.1)	1.44" (36.6)
PFFW-16F24N - 1	1" (25.4)	1-1/2" (38.1)	0.875" (22.23)	3.77" (95.8)	1.900" (48.26)	1.610" (40.89)	1.50" (38.1)	2.03" (51.6)
PFFW-16F32N - 1	1" (25.4)	2" (50.8)	0.875" (22.23)	3.77" (95.8)	2.375" (60.33)	2.052" (52.12)	1.50" (38.1)	2.50" (63.5)

PRO-FLARE TUBE EXTENSION COUPLING

PRO-FLARE X FEMALE FLARE ADAPTER

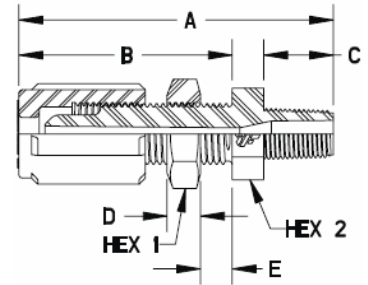
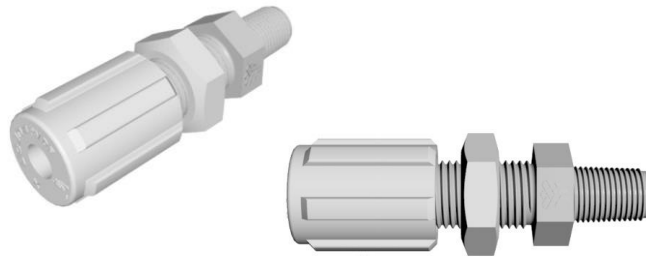


PRO-FLARE TUBE EXTENSION COUPLING				
Part Number	Tube Size(mm)	Orifice(mm)	A(mm)	B(mm)
PLF4STUN - 1	1/4" (6.4)	0.125" (3.18)	3.47" (88.1)	2.46" (62.4)
PLF6STUN - 1	3/8" (9.5)	0.250" (6.35)	3.61" (91.7)	2.30" (58.4)
PLF8STUN - 1	1/2" (12.7)	0.375" (9.53)	3.98" (101.1)	2.56" (65.0)
PLF12STUN - 1	3/4" (19.1)	0.625" (15.88)	4.48" (113.8)	3.04" (77.2)
PLF16STUN - 1	1" (25.4)	0.875" (22.23)	3.86" (98.0)	2.24" (56.9)



PRO-FLARE X FEMALE FLARE ADAPTER							
Part Number	Tube Size(mm)	Tube Size FF(mm)	Orifice(mm)	A(mm)	B(mm)	C(mm)	HEX(mm)
PLF46UAFFN - 1	1/4" (6.4)	3/8" (9.5)	0.150" (3.81)	2.76" (70.1)	1.22" (30.9)	1.29" (32.8)	0.63" (16.0)
PLF48UAFFN - 1	1/4" (6.4)	1/2" (12.7)	0.150" (3.81)	2.83" (71.8)	1.22" (30.9)	1.36" (34.5)	0.63" (16.0)
PLF68UAFFN - 1	3/8" (9.5)	1/2" (12.7)	0.250" (6.35)	2.92" (74.2)	1.31" (33.4)	1.36" (34.5)	0.63" (16.0)
PLF612UAFFN - 1	3/8" (9.5)	3/4" (19.1)	0.250" (6.35)	3.10" (78.7)	1.31" (33.4)	1.53" (39.0)	0.94" (23.9)
PLF88UAFFN - 1	1/2" (12.7)	1/2" (12.7)	0.375" (9.53)	3.03" (77.0)	1.42" (36.1)	1.36" (34.5)	0.81" (20.6)
PLF812UAFFN - 1	1/2" (12.7)	3/4" (19.1)	0.375" (9.53)	3.21" (81.5)	1.42" (36.1)	1.53" (39.0)	0.81" (20.6)
PLF1212UAFFN - 1	3/4" (19.1)	3/4" (19.1)	0.625" (15.88)	3.31" (84.0)	1.52" (38.7)	1.53" (39.0)	0.94" (23.9)
PLF1216UAFFN - 1	3/4" (19.1)	1" (25.4)	0.625" (15.88)	3.58" (90.9)	1.52" (38.7)	1.80" (45.8)	1.19" (30.2)
PLF1612UAFFN - 1	1" (25.4)	3/4" (19.1)	0.625" (15.88)	3.56" (90.4)	1.77" (45.0)	1.53" (39.0)	1.44" (36.6)
PLF1616UAFFN - 1	1" (25.4)	1" (25.4)	0.875" (22.23)	3.83" (97.2)	1.77" (45.0)	1.80" (45.8)	1.44" (36.6)

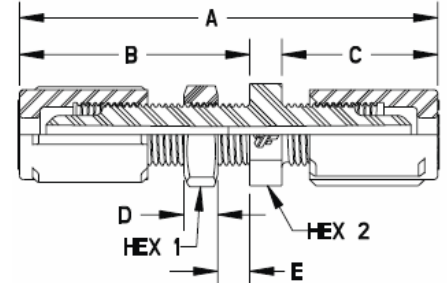
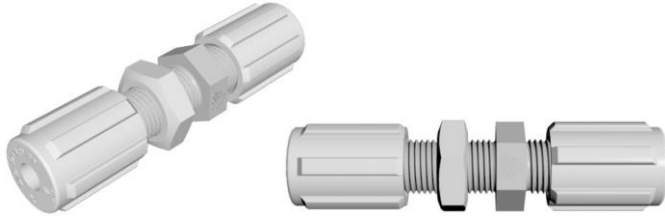
PRO-FLARE X MALE NPT PANEL MOUNT ADAPTER



PRO-FLARE X MALE NPT PANEL MOUNT ADAPTER										
Part Number	Tube Size(mm)	Male NTP	Orifice(mm)	A(mm)	B(mm)	C(mm)	D(mm)	E Max(mm)	HEX 1(mm)	HEX 2(mm)
PLF42UAMPN - 1	1/4" (6.4)	1/8"	0.150" (3.81)	2.60" (66.0)	1.80" (45.6)	0.55" (14.0)	0.27" (6.7)	0.25" (6.4)	0.75" (19.1)	0.63" (16.0)
PLF44UAMPN - 1	1/4" (6.4)	1/4"	0.150" (3.81)	2.60" (66.0)	1.80" (45.6)	0.55" (14.0)	0.27" (6.7)	0.25" (6.4)	0.75" (19.1)	0.69" (17.5)
PLF66UAMPN - 1	3/8" (9.5)	3/8"	0.250" (6.35)	2.73" (69.4)	1.93" (49.1)	0.55" (14.0)	0.27" (6.7)	0.25" (6.4)	0.94" (23.9)	0.81" (20.6)
PLF84UAMPN - 1	1/2" (12.7)	1/4"	0.302" (7.67)	2.87" (73.0)	2.07" (52.7)	0.55" (14.0)	0.27" (6.7)	0.25" (6.4)	1.06" (26.9)	0.94" (23.9)
PLF86UAMPN - 1	1/2" (12.7)	3/8"	0.375" (9.53)	2.87" (73.0)	2.07" (52.7)	0.55" (14.0)	0.27" (6.7)	0.25" (6.4)	1.06" (26.9)	0.94" (23.9)
PLF88UAMPN - 1	1/2" (12.7)	1/2"	0.375" (9.53)	2.99" (76.0)	2.07" (52.7)	0.67" (17.0)	0.27" (6.7)	0.25" (6.4)	1.06" (26.9)	0.94" (23.9)
PLF128UAMPN - 1	3/4" (19.1)	1/2"	0.546" (13.87)	3.30" (83.9)	2.38" (60.5)	0.67" (17.0)	0.27" (6.7)	0.25" (6.4)	1.31" (33.3)	1.19" (30.2)
PLF1212UAMPN - 1	3/4" (19.1)	3/4"	0.625" (15.88)	3.30" (83.9)	2.38" (60.5)	0.67" (17.0)	0.27" (6.7)	0.25" (6.4)	1.31" (33.3)	1.19" (30.2)
PLF1612UAMPN - 1	1" (25.4)	3/4"	0.742" (18.85)	3.40" (86.4)	2.48" (63.1)	0.67" (17.0)	0.27" (6.7)	0.25" (6.4)	1.75" (44.5)	1.44" (36.6)
PLF1616UAMPN - 1	1" (25.4)	1"	0.875" (22.23)	3.40" (86.4)	2.48" (63.1)	0.67" (17.0)	0.27" (6.7)	0.25" (6.4)	1.75" (44.5)	1.44" (36.6)

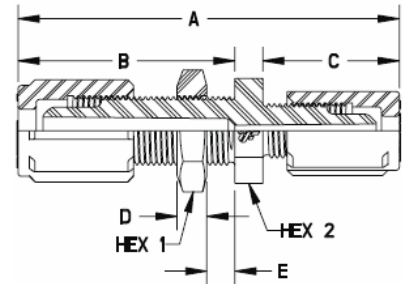
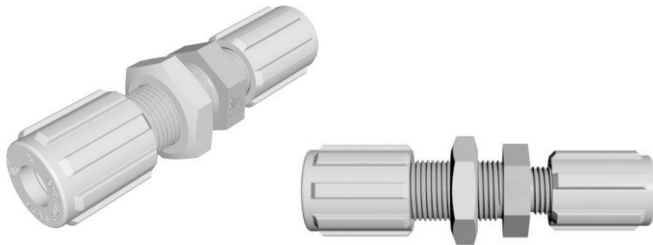
PRO-FLARE PANEL MOUNT COUPLING

PRO-FLARE REDUCING PANEL MOUNT COUPLING



PRO-FLARE PANEL MOUNT COUPLING

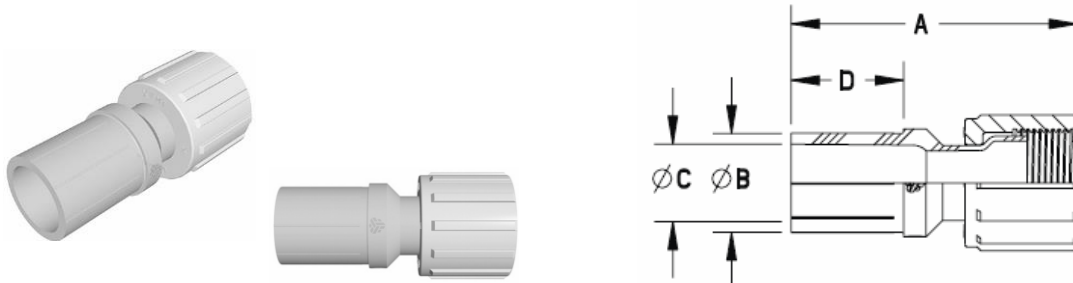
Part Number	Tube Size(mm)	Orifice(mm)	A(mm)	B(mm)	C(mm)	D(mm)	E Max(mm)	HEX 1(mm)	HEX 2(mm)
PLF4SUPN - 1	1/4" (6.4)	0.150" (3.81)	3.26" (82.9)	1.80" (45.6)	1.22" (30.9)	0.27" (6.7)	0.25" (6.4)	0.75" (19.1)	0.69" (17.5)
PLF6SUPN - 1	3/8" (9.5)	0.250" (6.35)	3.50" (88.8)	1.93" (49.1)	1.31" (33.4)	0.27" (6.7)	0.25" (6.4)	0.75" (19.1)	0.81" (20.6)
PLF8SUPN - 1	1/2" (12.7)	0.375" (9.53)	3.68" (93.4)	2.07" (52.7)	1.35" (34.4)	0.27" (6.7)	0.25" (6.4)	0.75" (19.1)	0.94" (23.9)
PLF12SUPN - 1	3/4" (19.1)	0.625" (15.88)	4.16" (105.6)	2.38" (60.5)	1.52" (38.7)	0.27" (6.7)	0.25" (6.4)	0.75" (19.1)	1.19" (30.2)
PLF16SUPN - 1	1" (25.5)	0.875" (22.23)	4.51" (114.5)	2.48" (63.1)	1.77" (45.0)	0.27" (6.7)	0.25" (6.4)	0.75" (19.1)	1.75" (44.5)



PRO-FLARE REDUCING PANEL MOUNT COUPLING

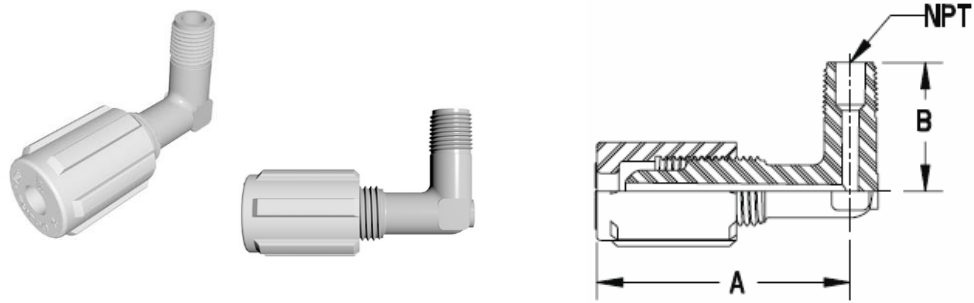
Part Number	Tube Size(mm)	Tube Size(mm)	Orifice(mm)	A(mm)	B(mm)	C(mm)	D(mm)	E Max(mm)	HEX 1(mm)	HEX 2(mm)
PLF64SUPRN - 1	3/8" (9.5)	1/4" (6.4)	0.125" (3.18)	3.40" (86.4)	1.93" (49.1)	1.22" (30.9)	0.27" (6.7)	0.25" (6.4)	0.94" (23.9)	0.81" (20.6)
PLF84SUPRN - 1	1/2" (12.7)	1/4" (6.4)	0.125" (3.18)	3.54" (89.9)	2.07" (52.7)	1.22" (30.9)	0.27" (6.7)	0.25" (6.4)	1.06" (26.9)	0.94" (23.9)
PLF86SUPRN - 1	1/2" (12.7)	3/8" (9.5)	0.250" (6.35)	3.64" (92.4)	2.07" (52.7)	1.31" (33.4)	0.27" (6.7)	0.25" (6.4)	1.06" (26.9)	0.94" (23.9)
PLF128SUPRN - 1	3/4" (19.1)	1/2" (12.7)	0.375" (9.53)	3.99" (101.2)	2.38" (60.5)	1.35" (34.4)	0.27" (6.7)	0.25" (6.4)	1.31" (33.3)	1.19" (30.2)
PLF1612SUPRN - 1	1" (25.5)	3/4" (19.1)	0.625" (15.88)	4.24" (107.7)	2.48" (63.1)	1.51" (38.3)	0.27" (6.7)	0.25" (6.4)	1.75" (44.5)	1.75" (44.5)

FEMALE FLARE X FUSION WELD ADAPTER



FEMALE FLARE X FUSION WELD ADAPTER							
Part Number	Tube Size FF(mm)	Pipe Size	Orifice(mm)	A(mm)	ØB(mm)	ØC(mm)	D(mm)
PFFW - 4FF4N - 1	1/4" (6.4)	1/4"	0.125" (3.18)	2.34" (59.5)	0.540" (13.72)	0.354" (8.99)	0.50" (12.7)
PFFW - 8FF8N - 1	1/2" (12.7)	1/2"	0.375" (9.53)	3.39" (86.2)	0.840" (21.34)	0.607" (15.42)	1.50" (38.1)
PFFW - 8FF8/CN - 1	1/2" (12.7)	1/2"	0.375" (9.53)	2.39" (60.8)	0.840" (21.34)	0.607" (15.42)	0.50" (12.7)
PFFW - 8FF12N - 1	1/2" (12.7)	3/4"	0.375" (9.53)	3.50" (88.8)	1.050" (26.67)	0.809" (20.55)	1.50" (38.1)
PFFW - 8FF12/CN - 1	1/2" (12.7)	3/4"	0.375" (9.53)	2.50" (63.4)	1.050" (26.67)	0.809" (20.55)	0.50" (12.7)
PFFW - 12FF8N - 1	3/4" (19.1)	1/2"	0.625" (15.88)	3.44" (87.4)	0.840" (21.34)	0.607" (15.42)	1.50" (38.1)
PFFW - 12FF8/CN - 1	3/4" (19.1)	1/2"	0.546" (13.87)	2.44" (62.0)	0.840" (21.34)	0.607" (15.42)	0.50" (12.7)
PFFW - 12FF12N - 1	3/4" (19.1)	3/4"	0.625" (15.88)	3.55" (90.1)	1.050" (26.67)	0.809" (20.55)	1.50" (38.1)
PFFW - 12FF12/CN - 1	3/4" (19.1)	3/4"	0.625" (15.88)	2.55" (64.7)	1.050" (26.67)	0.809" (20.55)	0.50" (12.7)
PFFW - 12FF16N - 1	3/4" (19.1)	1"	0.625" (15.88)	3.68" (93.4)	1.315" (33.40)	1.034" (26.26)	1.50" (38.1)
PFFW - 12FF16/CN - 1	3/4" (19.1)	1"	0.625" (15.88)	2.68" (68.0)	1.315" (33.40)	1.034" (26.26)	0.50" (12.7)
PFFW - 16FF12N - 1	1" (25.4)	3/4"	0.625" (15.88)	3.69" (93.6)	1.050" (26.67)	0.809" (20.55)	1.50" (38.1)
PFFW - 16FF12/CN - 1	1" (25.4)	3/4"	0.625" (15.88)	2.69" (68.2)	1.050" (26.67)	0.809" (20.55)	0.50" (12.7)
PFFW - 16FF16N - 1	1" (25.4)	1"	0.875" (22.23)	3.82" (97.0)	1.315" (33.40)	1.034" (26.26)	1.50" (38.1)
PFFW - 16FF16/CN - 1	1" (25.4)	1"	0.875" (22.23)	2.82" (71.6)	1.315" (33.40)	1.034" (26.26)	0.50" (12.7)
PFFW - 16FF24N - 1	1" (25.4)	1-1/2"	0.875" (22.23)	4.11" (104.4)	1.900" (48.26)	1.610" (40.89)	1.50" (38.1)
PFFW - 16FF24/CN - 1	1" (25.4)	1-1/2"	0.875" (22.23)	3.11" (79.0)	1.900" (48.26)	1.610" (40.89)	0.50" (12.7)
PFFW - 16FF32N - 1	1" (25.4)	2"	0.875" (22.23)	4.35" (110.4)	2.375" (60.33)	2.052" (52.12)	1.50" (38.1)
PFFW - 16FF32/CN - 1	1" (25.4)	2"	0.875" (22.23)	3.35" (85.0)	2.375" (60.33)	2.052" (52.12)	0.50" (12.7)

MALE NPT 90° ELBOW ADAPTER

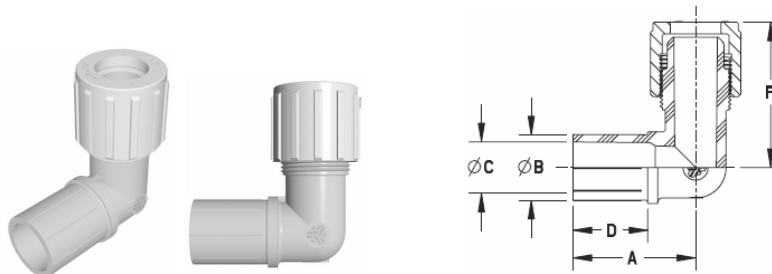


MALE NPT 90° ELBOW ADAPTER					
Part Number	Tube Size(mm)	Male NTP	Orifice(mm)	A(mm)	B(mm)
PLF42EAMN - 1	1/4" (6.4)	1/8" (3.2)	0.125" (3.18)	1.82" (46.2)	0.92" (23.4)
PLF44EAMN - 1	1/4" (6.4)	1/4" (6.4)	0.125" (3.18)	1.82" (46.2)	1.12" (28.4)
PLF46EAMN - 1	1/4" (6.4)	3/8" (9.5)	0.125" (3.18)	1.82" (46.2)	1.12" (28.4)
PLF48EAMN - 1	1/4" (6.4)	1/2" (12.7)	0.125" (3.18)	1.82" (46.2)	1.31" (33.3)
PLF62EAMN - 1	3/8" (9.5)	1/8" (3.2)	0.200" (5.08)	1.95" (49.6)	0.97" (24.6)
PLF64EAMN - 1	3/8" (9.5)	1/4" (6.4)	0.250" (6.35)	1.95" (49.6)	1.18" (30.0)
PLF66EAMN - 1	3/8" (9.5)	3/8" (9.5)	0.250" (6.35)	1.95" (49.6)	1.18" (30.0)
PLF68EAMN - 1	3/8" (9.5)	1/2" (12.7)	0.250" (6.35)	1.96" (49.9)	1.36" (34.5)
PLF612EAMN - 1	3/8" (9.5)	3/4" (19.1)	0.250" (6.35)	2.17" (55.2)	1.36" (34.5)
PLF84EAMN - 1	1/2" (12.7)	1/4" (6.4)	0.290" (7.37)	2.09" (53.2)	1.24" (31.5)
PLF86EAMN - 1	1/2" (12.7)	3/8" (9.5)	0.375" (9.53)	2.09" (53.2)	1.24" (31.5)
PLF88EAMN - 1	1/2" (12.7)	1/2" (12.7)	0.375" (9.53)	2.09" (53.2)	1.42" (36.1)
PLF812EAMN - 1	1/2" (12.7)	3/4" (19.1)	0.375" (9.53)	2.26" (57.5)	1.42" (36.1)
PLF128EAMN - 1	3/4" (19.1)	1/2" (12.7)	0.540" (13.72)	2.44" (62.1)	1.57" (39.9)
PLF1212EAMN - 1	3/4" (19.1)	3/4" (19.1)	0.625" (15.88)	2.45" (62.3)	1.57" (39.9)
PLF1216EAMN - 1	3/4" (19.1)	1" (25.4)	0.625" (15.88)	2.72" (69.2)	1.78" (45.2)
PLF1612EAMN - 1	1" (25.4)	3/4" (19.1)	0.660" (16.76)	2.80" (71.2)	1.82" (46.2)
PLF1616EAMN - 1	1" (25.4)	1" (25.4)	0.875" (22.23)	3.00" (76.3)	2.02" (51.3)

PRO-FLARE 90° ELBOW PRO-FLARE X FUSION WELD 90° ELBOW ADAPTER

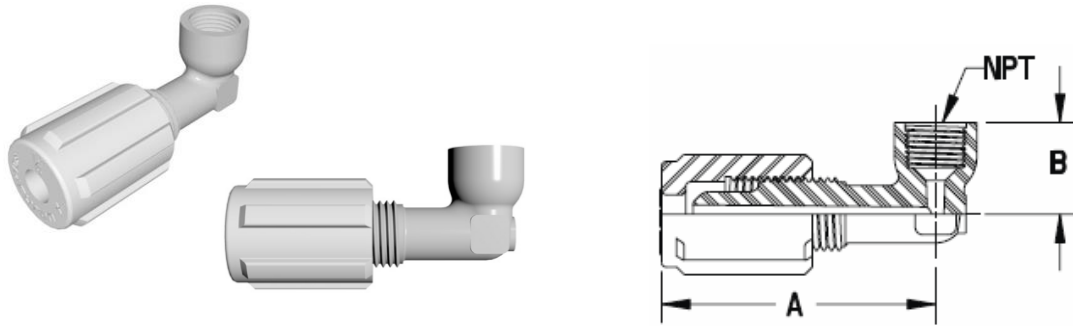


PRO-FLARE 90° ELBOW				
Part Number	Tube Size(mm)	Orifice(mm)	A(mm)	B(mm)
PLF4UEN - 1	1/4" (6.4)	0.125" (3.18)	1.74" (44.2)	1.74" (44.2)
PLF6UEN - 1	3/8" (9.5)	0.250" (6.35)	1.89" (48.1)	1.89" (48.1)
PLF8UEN - 1	1/2" (12.7)	0.375" (9.53)	2.06" (52.4)	2.06" (52.4)
PLF12UEN - 1	3/4" (19.1)	0.625" (15.88)	1.74" (44.2)	1.74" (44.2)
PLF16UEN - 1	1" (25.4)	0.875" (22.23)	2.80" (71.2)	2.80" (71.2)



PRO-FLARE X FUSION WELD 90° ELBOW ADAPTER								
Part Number	Tube Size(mm)	Pipe Size(mm)	Orifice(mm)	A(mm)	ØB(mm)	ØC(mm)	D(mm)	F(mm)
FW90 - 4F4N - 1	1/4" (6.4)	1/4" (6.4)	0.125" (3.18)	1.08" (27.4)	0.540" (13.716)	0.354" (8.99)	0.50" (12.7)	1.99" (50.6)
FW90 - 8F8N - 1	1/2" (12.7)	1/2" (12.7)	0.375" (9.53)	2.20" (55.9)	0.840" (21.336)	0.607" (15.42)	1.50" (38.1)	2.51" (63.8)
FW90 - 8F12N - 1	1/2" (12.7)	3/4" (19.1)	0.375" (9.53)	2.23" (56.6)	1.050" (26.670)	0.809" (20.55)	1.50" (38.1)	2.54" (64.6)
FW90 - 12F12N - 1	3/4" (19.1)	3/4" (19.1)	0.625" (15.88)	2.35" (59.7)	1.050" (26.670)	0.809" (20.55)	1.50" (38.1)	2.57" (65.2)
FW90 - 12F16N - 1	1/2" (12.7)	1" (25.4)	0.625" (15.88)	2.35" (59.7)	1.315" (33.401)	1.034" (26.26)	1.50" (38.1)	2.73" (69.3)
FW90 - 16F16N - 1	1" (25.4)	1" (25.4)	0.875" (22.23)	2.46" (62.5)	1.315" (33.401)	1.034" (26.26)	1.50" (38.1)	2.93" (74.3)
FW90 - 16F24N - 1	1" (25.4)	1-1/2" (38.1)	0.875" (22.23)	2.44" (61.9)	1.900" (48.260)	1.610" (40.89)	1.50" (38.1)	3.21" (81.5)
FW90 - 16F32N - 1	1" (25.4)	2" (50.8)	0.875" (22.23)	2.50" (63.5)	2.375" (60.325)	2.052" (52.12)	1.50" (38.1)	3.42" (86.8)
FW90 - 12F8N - 1	3/4" (19.1)	1/2" (12.7)	0.607" (15.42)	2.20" (55.9)	0.840" (21.336)	0.607" (15.42)	1.50" (38.1)	2.57" (65.3)
FW90 - 16F12N - 1	1" (25.4)	3/4" (19.1)	0.809" (20.55)	2.35" (59.7)	1.050" (26.670)	0.809" (20.55)	1.50" (38.1)	2.90" (73.7)

PRO-FLARE X FEMALE NPT 90° ELBOW ADAPTER



PRO-FLARE X FEMALE NPT 90° ELBOW ADAPTER					
Part Number	Tube Size(mm)	Female NTP(mm)	Orifice(mm)	A(mm)	B(mm)
PLF42EAFN - 1	1/4" (6.4)	1/8" (3.2)	0.125" (3.18)	1.82" (46.2)	0.61" (15.5)
PLF44EAFN - 1	1/4" (6.4)	1/4" (6.4)	0.125" (3.18)	1.82" (46.2)	0.88" (22.4)
PLF64EAFN - 1	3/8" (9.5)	1/4" (6.4)	0.250" (6.35)	1.96" (49.9)	0.85" (21.6)
PLF66EAFN - 1	3/8" (9.5)	3/8" (9.5)	0.250" (6.35)	1.95" (49.6)	0.91" (23.1)
PLF68EAFN - 1	3/8" (9.5)	1/2" (12.7)	0.875" (22.23)	1.96" (49.9)	1.13" (28.7)
PLF84EAFN - 1	1/2" (12.7)	1/4" (6.4)	0.375" (9.53)	2.09" (53.2)	0.88" (22.4)
PLF86EAFN - 1	1/2" (12.7)	3/8" (9.5)	0.375" (9.53)	2.09" (53.2)	1.00" (25.4)
PLF88EAFN - 1	1/2" (12.7)	1/2" (12.7)	0.375" (9.53)	2.09" (53.2)	1.25" (31.8)
PLF1616EAFN - 1	1" (25.4)	1" (25.4)	0.875" (22.23)	3.00" (76.3)	1.50" (38.1)

PRO-FLARE REDUCING 90° ELBOW ADAPTER



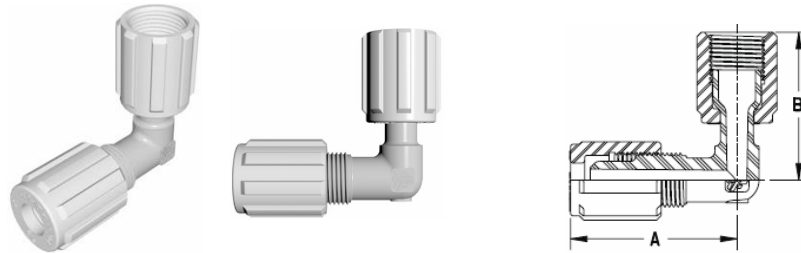
PRO-FLARE REDUCING 90° ELBOW ADAPTER					
Part Number	Tube Size(mm)	Tube Size(mm)	Orifice(mm)	A(mm)	B(mm)
PLF64UERN - 1	3/8" (9.5)	1/4" (6.4)	0.150" (3.81)	1.89" (48.1)	1.80" (45.6)
PLF84UERN - 1	1/2" (12.7)	1/4" (6.4)	0.150" (3.81)	2.06" (52.4)	1.80" (45.6)
PLF86UERN - 1	1/2" (12.7)	3/8" (9.5)	0.250" (6.35)	2.06" (52.4)	1.89" (48.1)
PLF124UERN - 1	3/4" (19.1)	1/4" (6.4)	0.150" (3.81)	2.31" (58.8)	1.80" (45.6)
PLF126UERN - 1	3/4" (19.1)	3/8" (9.5)	0.250" (6.35)	2.31" (58.8)	1.89" (48.1)
PLF128UERN - 1	3/4" (19.1)	1/2" (12.7)	0.375" (9.53)	2.31" (58.8)	2.06" (52.4)
PLF1612UERN - 1	1" (25.4)	3/4" (19.1)	0.625" (15.88)	2.80" (71.2)	2.31" (58.8)

FUSION WELD X 90° FEMALE FLARE ELBOW



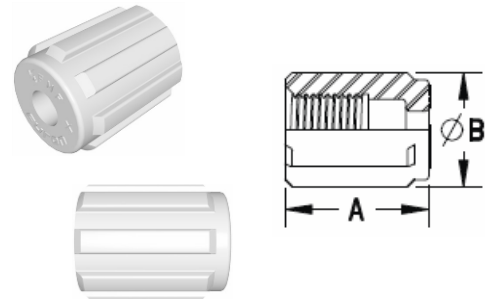
FUSION WELD X 90° FEMALE FLARE ELBOW								
Part Number	Tube Size FF(mm)	Pipe Size(mm)	Orifice(mm)	A(mm)	ØB(mm)	ØC(mm)	D(mm)	F(mm)
PLFETA - 4FF4N - 1	1/4" (6.4)	1/4" (6.4)	0.125" (3.18)	1.08" (27.4)	0.540" (13.716)	0.354" (8.99)	0.50" (12.7)	1.82" (46.1)
PLFETA - 8FF8N - 1	1/2" (12.7)	1/2" (12.7)	0.375" (9.53)	2.20" (55.9)	0.840" (21.336)	0.607" (15.42)	1.50" (38.1)	2.02" (51.3)
PLFETA - 8FF12N - 1	1/2" (12.7)	3/4" (19.1)	0.375" (9.53)	2.23" (56.6)	1.050" (26.670)	0.809" (20.55)	1.50" (38.1)	2.05" (52.1)
PLFETA - 12FF12N - 1	3/4" (19.1)	3/4" (19.1)	0.625" (15.88)	2.35" (59.7)	1.050" (26.670)	0.809" (20.55)	1.50" (38.1)	2.22" (56.4)
PLFETA - 12FF16N - 1	3/4" (19.1)	1" (25.4)	0.625" (15.88)	2.35" (59.7)	1.315" (33.401)	1.034" (26.26)	1.50" (38.1)	2.39" (60.7)
PLFETA - 16FF16N - 1	1" (25.4)	1" (25.4)	0.875" (22.23)	2.46" (62.5)	1.315" (33.401)	1.034" (26.26)	1.50" (38.1)	2.66" (67.6)
PLFETA - 16FF24N - 1	1" (25.4)	1-1/2" (38.1)	0.875" (22.23)	2.44" (61.9)	1.900" (48.260)	1.610" (40.89)	1.50" (38.1)	2.94" (74.7)
PLFETA - 16FF32N - 1	1" (25.4)	2" (50.8)	0.875" (22.23)	2.50" (63.5)	2.375" (60.325)	2.052" (52.12)	1.50" (38.1)	3.15" (80.0)
PLFETA - 12F8N - 1	3/4" (19.1)	1/2" (12.7)	0.607" (15.42)	2.20" (55.9)	0.845" (21.46)	0.607" (15.42)	1.50" (38.1)	2.21" (56.2)
PLFETA - 16FF12N - 1	1" (25.4)	3/4" (19.1)	0.809" (20.55)	2.35" (59.7)	1.055" (26.80)	0.809" (20.55)	1.50" (38.1)	2.66" (67.4)

PRO-FLARE X FEMALE FLARE 90° ELBOW ADAPTER

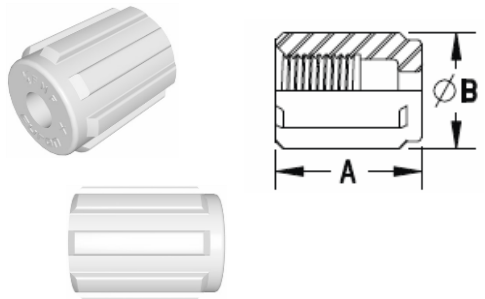


PRO-FLARE X FEMALE FLARE 90° ELBOW ADAPTER				
Part Number	Tube Size(mm)	Orifice(mm)	A(mm)	B(mm)
PLF6FFUEN - 1	3/8" (9.5)	0.250" (6.35)	1.89" (48.1)	1.68" (42.6)
PLF8FFUEN - 1	1/2" (12.7)	0.375" (9.53)	2.06" (52.4)	1.80" (45.7)
PLF12FFUEN - 1	3/4" (19.1)	0.625" (15.88)	2.31" (58.8)	2.13" (54.1)
PLF16FFUEN - 1	1" (25.4)	0.875" (22.23)	2.80" (71.2)	2.64" (67.1)

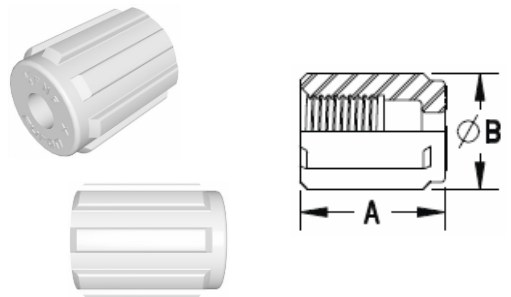
PVDF NUT			
Part Number	Tube Size(mm)	A(mm)	ØB(mm)
PLF4N - 1	1/4" (6.4)	1.00" (25.4)	0.80" (20.3)
PLF6N - 1	3/8" (9.5)	1.03" (26.2)	0.91" (23.1)
PLF8N - 1	1/2" (12.7)	1.08" (27.4)	1.03" (26.2)
PLF12N - 1	3/4" (19.1)	1.24" (31.5)	1.33" (33.8)
PLF16N - 1	1" (25.4)	1.50" (38.1)	1.81" (46.0)



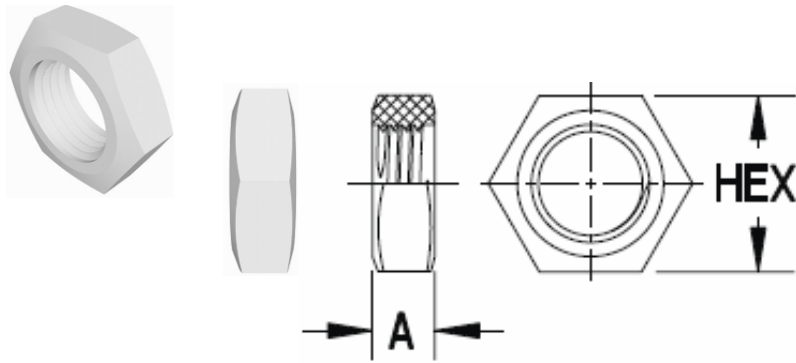
ETFE NUT			
Part Number	Tube Size(mm)	A(mm)	ØB(mm)
PLFFMF4N - 2	1/4" (6.4)	1.00" (25.4)	0.80" (20.3)
PLFFMF6N - 2	3/8" (9.5)	1.03" (26.2)	0.91" (23.1)
PLFFMF8N - 2	1/2" (12.7)	1.08" (27.4)	1.03" (26.2)
PLFFMF12N - 2	3/4" (19.1)	1.24" (31.5)	1.33" (33.8)
PLFFMF16N - 2	1" (25.4)	1.50" (38.1)	1.81" (46.0)



PFA NUT			
Part Number	Tube Size(mm)	A(mm)	ØB(mm)
PLFFMF4N - 3	1/4" (6.4)	1.00" (25.4)	0.83" (21.1)
PLFFMF6N - 3	3/8" (9.5)	1.03" (26.2)	0.94" (23.9)
PLFFMF8N - 3	1/2" (12.7)	1.08" (27.4)	1.07" (27.2)
PLFFMF12N - 3	3/4" (19.1)	1.24" (31.5)	1.41" (35.8)
PLFFMF16N - 3	1" (25.4)	1.50" (38.1)	1.89" (48.0)

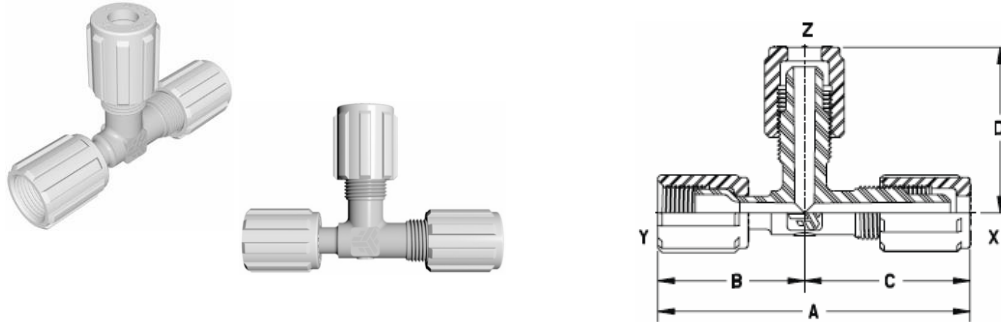


PVDF PANEL NUT



PVDF PANEL NUT			
Part Number	Tube Size(mm)	A(mm)	HEX(mm)
PLF4PN	1/4" (6.4)	0.75" (19.1)	0.27" (6.7)
PLF6PN	3/8" (9.5)	0.94" (23.9)	0.27" (6.7)
PLF8PN	1/2" (12.7)	1.06" (26.9)	0.27" (6.7)
PLF12PN	3/4" (19.1)	1.31" (33.3)	0.27" (6.7)
PLF16PN	1" (25.4)	1.75" (44.5)	0.27" (6.7)

FEMALE FLARE X PRO-FLARE X PRO-FLARE TEE FEMALE FLARE TEE

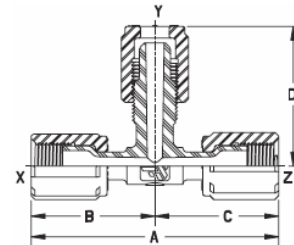


FEMALE FLARE X PRO-FLARE X PRO-FLARE TEE						
Part Number	Tube Size X x Y x Z	Orifice(mm)	A(mm)	B(mm)	C(mm)	D(mm)
PLF66FF4UTFFN - 1	3/8" 3/8" 1/4"	0.150" (3.81)	3.57" (90.7)	1.68" (42.6)	1.89" (48.1)	1.80" (45.6)
PLF66FF6UTFFN - 1	3/8" 3/8" 3/8"	0.250" (6.35)	3.57" (90.7)	1.68" (42.6)	1.89" (48.1)	1.89" (48.1)
PLF88FF4UTFFN - 1	1/2" 1/2" 1/4"	0.150" (3.81)	3.86" (98.1)	1.80" (45.7)	2.06" (52.4)	1.87" (47.6)
PLF88FF8UTFFN - 1	1/2" 1/2" 1/2"	0.375" (9.53)	3.86" (98.1)	1.80" (45.7)	2.06" (52.4)	2.06" (52.4)
PLF128FF12UTFFN - 1	3/4" 1/2" 3/4"	0.375" (9.53)	4.24" (107.6)	1.92" (48.9)	2.31" (58.8)	2.31" (58.8)
PLF1212FF6UTFFN - 1	3/4" 3/4" 3/8"	0.250" (6.35)	4.44" (112.8)	2.13" (54.1)	2.31" (58.8)	2.17" (55.2)
PLF1212FF12UTFFN - 1	3/4" 3/4" 3/4"	0.625" (15.88)	4.44" (112.8)	2.13" (54.1)	2.31" (58.8)	2.31" (58.8)
PLF1616FF16UTFFN - 1	1" 1" 1"	0.875" (22.23)	5.43" (138.0)	2.63" (66.8)	2.80" (71.2)	2.80" (71.2)

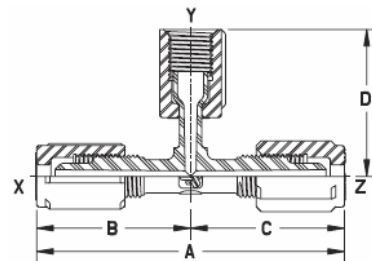
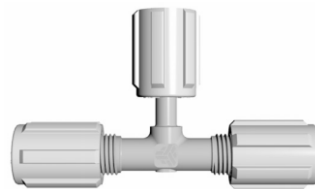


FEMALE FLARE TEE						
Part Number	Tube Size	Orifice(mm)	A(mm)	B(mm)	C(mm)	D(mm)
PLF6UTFFN - 1	3/8" (9.5)	0.250" (6.35)	3.35" (85.2)	1.68" (42.6)	1.68" (42.6)	1.68" (42.6)
PLF8UTFFN - 1	1/2" (12.7)	0.375" (9.53)	3.60" (91.4)	1.80" (45.7)	1.80" (45.7)	1.80" (45.7)
PLF12UTFF - 1	3/4" (19.1)	0.625" (15.88)	4.26" (108.2)	2.13" (54.1)	2.13" (54.1)	2.13" (54.1)
PLF16UTFF - 1	1" (25.4)	0.875" (22.23)	5.26" (133.6)	2.63" (66.8)	2.63" (66.8)	2.63" (66.8)

FEMALE FLARE X FEMALE FLARE X PRO-FLARE TEE PRO-FLARE X PRO-FLARE X FEMALE FLARE TEE



FEMALE FLARE X FEMALE FLARE X PRO-FLARE TEE						
Part Number	Tube Size X x Y x Z	Orifice(mm)	A(mm)	B(mm)	C(mm)	D(mm)
PLF6FF66FFUTRFFN - 1	3/8" 3/8" 3/8"	0.250" (6.35)	3.36" (85.2)	1.68" (42.6)	1.68" (42.6)	1.89" (48.1)
PLF8FF88FFUTRFFN - 1	1/2" 1/2" 1/2"	0.375" (9.53)	3.60" (91.4)	1.80" (44.7)	1.80" (45.7)	2.06" (52.4)
PLF8FF128FFUTRFFN - 1	1/2" 3/4" 1/2"	0.625" (15.88)	3.60" (91.4)	1.80" (45.7)	1.80" (45.7)	2.31" (58.8)
PLF12FF1212FFUTRFFN - 1	3/4" 3/4" 3/4"	0.625" (15.88)	4.26" (108.2)	2.13" (54.1)	2.13" (54.1)	2.31" (58.8)

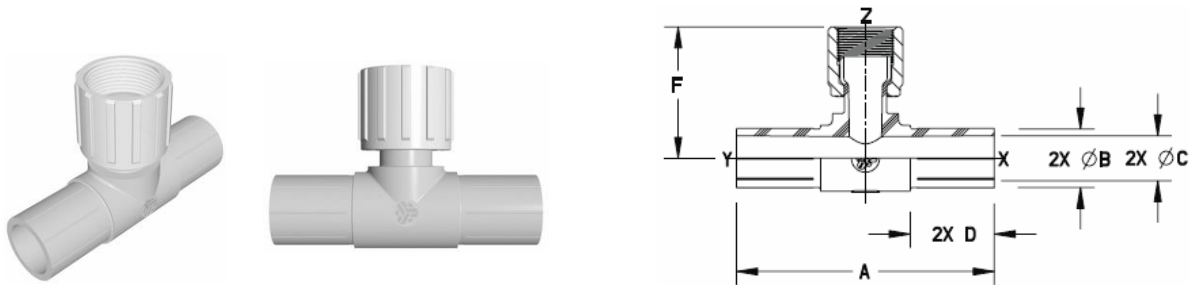


PRO-FLARE X PRO-FLARE X FEMALE FLARE TEE						
Part Number	Tube Size X x Y x Z	Orifice(mm)	A(mm)	B(mm)	C(mm)	D(mm)
PLF44FF4UTRFFN - 1	1/4" 1/4" 1/4"	0.150" (3.81)	3.49" (88.7)	1.75" (44.4)	1.75" (44.4)	1.67" (42.3)
PLF64FF6UTRFFN - 1	3/8" 1/4" 3/8"	0.150" (3.81)	3.79" (96.2)	1.89" (48.1)	1.89" (48.1)	1.73" (43.9)
PLF88FF8UTRFFN - 1	1/2" 1/2" 1/2"	0.375" (9.53)	4.13" (104.8)	2.06" (52.4)	2.06" (52.4)	1.80" (45.7)
PLF124FF12UTRFFN - 1	3/4" 1/4" 3/4"	0.150" (3.81)	4.63" (117.5)	2.31" (58.8)	2.31" (58.8)	1.92" (48.7)
PLF128FF12UTRFFN - 1	3/4" 1/2" 3/4"	0.375" (9.53)	4.63" (117.5)	2.31" (58.8)	2.31" (58.8)	1.89" (48.1)
PLF1212FF12UTRFFN - 1	3/4" 3/4" 3/4"	0.625" (15.88)	4.63" (117.5)	2.31" (58.8)	2.31" (58.8)	2.13" (54.2)

FEMALE FLARE X PRO-FLARE X FEMALE FLARE TEE FUSION WELD X FEMALE FLARE TEE



FEMALE FLARE X PRO-FLARE X FEMALE FLARE TEE						
Part Number	Tube Size X x Y x Z	Orifice(mm)	A(mm)	B(mm)	C(mm)	D(mm)
PLF44FF4FFUTRFFN - 1	1/4" 1/4" 1/4"	0.150" (3.81)	3.49" (88.7)	1.75" (44.4)	1.75" (44.4)	1.76" (44.6)
PLF88FF8FFUTRFFN - 1	1/2" 1/2" 1/2"	0.375" (9.53)	3.86" (98.1)	1.80" (44.7)	2.06" (52.4)	1.80" (45.7)
PLF128FF12FFUTRFFN - 1	3/4" 1/2" 3/4"	0.375" (9.53)	4.44" (112.7)	2.12" (54.0)	2.31" (58.8)	1.98" (50.3)
PLF812FF12FFUTRFFN - 1	3/4" 3/4" 1/2"	0.625" (15.88)	4.19" (106.4)	2.12" (54.0)	2.06" (52.4)	2.12" (54.0)
PLF1212FF12FFUTRFFN - 1	3/4" 3/4" 3/4"	0.625" (15.88)	4.44" (112.7)	2.12" (54.0)	2.31" (58.8)	2.12" (54.0)



FUSION WELD X FEMALE FLARE TEE							
Part Number	Pipe x Pipe x Tube X x Y x Z	Orifice(mm)	A(mm)	ØB(mm)	ØC(mm)	D(mm)	F(mm)
FWBT-888FFN - 1	1/2" 1/2" 1/2"	0.375" (9.53)	4.60" (116.8)	0.840" (21.34)	0.607" (15.42)	1.50" (38.1)	2.16" (55.0)
FWBT-121212FFN - 1	3/4" 3/4" 3/4"	0.625" (15.88)	4.60" (116.8)	1.050" (26.67)	0.809" (20.55)	1.50" (38.1)	2.57" (65.3)
FWBT-121216FFN - 1	3/4" 3/4" 1"	0.809" (20.55)	4.92" (125.0)	1.050" (26.67)	0.809" (20.55)	1.50" (38.1)	2.76" (70.2)

PRO-FLARE TEE



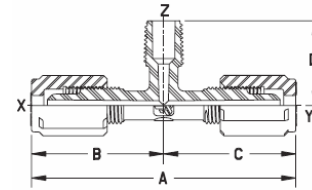
PRO-FLARE TEE						
Part Number	Tube Size	Orifice(mm)	A(mm)	B(mm)	C(mm)	D(mm)
PLF4UTN - 1	1/4" (6.4)	0.125" (3.18)	3.48" (88.5)	1.74" (44.2)	1.74" (44.2)	1.74" (44.2)
PLF6UTN - 1	3/8" (9.5)	0.250" (6.35)	3.79" (96.2)	1.89" (48.1)	1.89" (48.1)	1.89" (48.1)
PLF8UTN - 1	1/2" (12.7)	0.375" (9.53)	4.13" (104.8)	2.06" (52.4)	2.06" (52.4)	2.06" (52.4)
PLF12UTN - 1	3/4" (19.1)	0.625" (15.88)	4.63" (117.5)	2.31" (58.8)	2.31" (58.8)	2.31" (58.8)
PLF16UTN - 1	1" (25.4)	0.875" (22.23)	5.61" (142.4)	2.80" (71.2)	2.80" (71.2)	2.80" (71.2)

PRO-FLARE REDUCING TEE

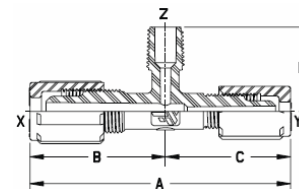


PRO-FLARE REDUCING TEE						
Part Number	Tube Size X x Y x Z	Orifice(mm)	A(mm)	B(mm)	C(mm)	D(mm)
PLF664UTRN - 1	3/8" 3/8" 1/4"	0.150" (3.81)	3.79" (96.2)	1.89" (48.1)	1.89" (48.1)	1.80" (45.6)
PLF668UTRN - 1	3/8" 3/8" 1/2"	0.250" (6.35)	4.05" (102.8)	2.02" (51.4)	2.02" (51.4)	2.06" (52.4)
PLF6612UTRN - 1	3/8" 3/8" 3/4"	0.375" (9.53)	4.53" (115.0)	2.26" (57.5)	2.26" (57.5)	2.31" (58.8)
PLF884UTRN - 1	1/2" 1/2" 1/4"	0.150" (3.81)	4.13" (104.8)	2.06" (52.4)	2.06" (52.4)	1.86" (47.2)
PLF886UTRN - 1	1/2" 1/2" 3/8"	0.250" (6.35)	4.13" (104.8)	2.06" (52.4)	2.06" (52.4)	1.95" (49.6)
PLF12124UTRN - 1	3/4" 3/4" 1/4"	0.150" (3.81)	4.63" (117.5)	2.31" (58.8)	2.31" (58.8)	2.01" (51.0)
PLF12812UTRN - 1	3/4" 1/2" 3/4"	0.875" (22.23)	5.43" (138.0)	2.63" (66.8)	2.80" (71.2)	2.80" (71.2)
PLF16168UTRN - 1	1" 1" 1/2"	0.375" (9.53)	5.61" (142.4)	2.80" (71.2)	2.80" (71.2)	2.45" (62.3)
PLF161612UTRN - 1	1" 1" 3/4"	0.875" (22.23)	5.43" (138.0)	2.63" (66.8)	2.80" (71.2)	2.80" (71.2)
PLF646UTRN - 1	3/8" 1/4" 3/8"	0.150" (3.81)	3.74" (95.0)	1.85" (46.9)	1.89" (48.1)	1.89" (48.1)
PLF848UTRN - 1	1/2" 1/4" 1/2"	0.150" (3.81)	3.91" (99.3)	1.85" (46.9)	2.06" (52.4)	2.06" (52.4)
PLF12812UTRN - 1	3/4" 1/2" 3/4"	0.375" (9.53)	4.52" (114.7)	2.20" (56.0)	2.31" (58.8)	2.31" (58.8)
PLF1248UTRN - 1	3/4" 1/4" 1/2"	0.150" (3.81)	4.07" (103.4)	1.76" (44.6)	2.31" (58.8)	1.96" (49.9)
PLF844UTRN - 1	1/2" 1/4" 1/4"	0.150" (3.81)	3.81" (96.8)	2.06" (52.4)	1.75" (44.4)	1.75" (44.4)
PLF866UTRN - 1	1/2" 3/8" 3/8"	0.250" (6.35)	3.96" (100.5)	2.06" (52.4)	1.89" (48.1)	1.89" (48.1)
PLF1288UTRN - 1	3/4" 1/2" 1/2"	0.375" (9.53)	4.38" (111.2)	2.31" (58.8)	2.06" (52.4)	2.06" (52.4)

PRO-FLARE X MALE NPT BRANCH TEE MALE NPT BRANCH TEE REDUCER

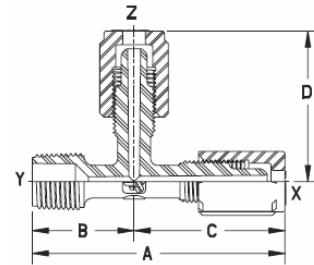


PRO-FLARE X MALE NPT BRANCH TEE						
Part Number	Tube Size (NPT) X x Y x Z	Orifice(mm)	A(mm)	B(mm)	C(mm)	D(mm)
PLF442MBTN - 1	1/4" 1/4" 1/8"	0.150" (3.81)	3.49" (88.7)	1.75" (44.4)	1.75" (44.4)	0.92" (23.4)
PLF444MBTN - 1	1/4" 1/4" 1/4"	0.150" (3.81)	3.49" (88.7)	1.75" (44.4)	1.75" (44.4)	1.12" (28.4)
PLF662MBTN - 1	3/8" 3/8" 1/8"	0.188" (4.78)	3.79" (96.2)	1.89" (48.1)	1.89" (48.1)	0.97" (24.6)
PLF664MBTN - 1	3/8" 3/8" 1/4"	0.225" (5.72)	3.79" (96.2)	1.89" (48.1)	1.89" (48.1)	1.18" (30.0)
PLF666MBTN - 1	3/8" 3/8" 3/8"	0.225" (5.72)	3.79" (96.2)	1.89" (48.1)	1.89" (48.1)	1.18" (30.0)
PLF884MBTN - 1	1/2" 1/2" 1/4"	0.250" (6.35)	4.13" (104.8)	2.06" (52.4)	2.06" (52.4)	1.24" (31.5)
PLF886MBTN - 1	1/2" 1/2" 3/8"	0.350" (8.89)	4.13" (104.8)	2.06" (52.4)	2.06" (52.4)	1.24" (31.5)
PLF888MBTN - 1	1/2" 1/2" 1/2"	0.375" (9.53)	4.13" (104.8)	2.06" (52.4)	2.06" (52.4)	1.42" (36.1)
PLF12124MBTN - 1	3/4" 3/4" 1/4"	0.150" (3.81)	4.63" (117.5)	2.31" (58.8)	2.31" (58.8)	1.39" (35.3)
PLF12128MBTN - 1	3/4" 3/4" 1/2"	0.438" (11.13)	4.63" (117.5)	2.31" (58.8)	2.31" (58.8)	1.57" (39.9)
PLF121212MBTN - 1	3/4" 3/4" 3/4"	0.600" (15.24)	4.63" (117.5)	2.31" (58.8)	2.31" (58.8)	1.57" (39.9)
PLF16164MBTN - 1	1" 1" 1/4"	0.150" (3.81)	5.61" (142.4)	2.80" (71.2)	2.80" (71.2)	1.63" (41.4)
PLF161616MBTN - 1	1" 1" 1"	0.850" (21.59)	5.61" (142.4)	2.80" (71.2)	2.80" (71.2)	2.02" (51.3)

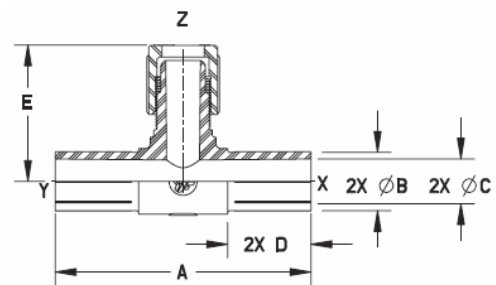


MALE NPT BRANCH TEE REDUCER						
Part Number	Pipe x Pipe x Tube (NPT) X x Y x Z	Orifice(mm)	A(mm)	B(mm)	C(mm)	D(mm)
PLFFMF644MBTRN - 1	3/8" 1/4" 1/4"	0.150" (3.81)	3.64" (92.5)	1.89" (48.1)	1.75" (44.4)	1.18" (30.0)
PLFFMF646MBTRN - 1	3/8" 1/4" 3/8"	0.150" (3.81)	3.64" (92.5)	1.89" (48.1)	1.75" (44.4)	1.18" (30.0)
PLFFMF866MBTRN - 1	1/2" 3/8" 3/8"	0.250" (6.35)	3.96" (100.5)	2.06" (52.4)	1.89" (48.1)	1.18" (30.0)
PLFFMF848MBTRN - 1	1/2" 1/4" 1/2"	0.150" (3.81)	3.81" (96.8)	2.06" (52.4)	1.75" (44.4)	1.42" (36.1)
PLFFMF868MBTRN - 1	1/2" 3/8" 1/2"	0.250" (6.35)	3.96" (100.5)	2.06" (52.4)	1.89" (48.1)	1.42" (36.1)

PRO-FLARE X MALE NPT RUN TEE FUSION WELD X PRO-FLARE TEE



PRO-FLARE X MALE NPT RUN TEE						
Part Number	Tube x Male x Tube (NPT) X x Y x Z	Orifice(mm)	A(mm)	B(mm)	C(mm)	D(mm)
PLF424MRTN - 1	1/4" 1/8" 1/4"	0.150" (3.81)	2.67" (67.7)	0.92" (23.4)	1.75" (44.4)	1.75" (44.4)
PLF444MRTN - 1	1/4" 1/4" 1/4"	0.150" (3.81)	2.87" (72.8)	1.12" (28.4)	1.75" (44.4)	1.75" (44.4)
PLF464MRTN - 1	1/4" 3/8" 1/4"	0.150" (3.81)	2.93" (74.3)	1.18" (30.0)	1.75" (44.4)	1.75" (44.4)
PLF626MRTN - 1	3/8" 1/8" 3/8"	0.250" (6.35)	2.81" (71.5)	0.92" (23.4)	1.89" (48.1)	1.89" (48.1)
PLF646MRTN - 1	3/8" 1/4" 3/8"	0.250" (6.35)	3.01" (76.5)	1.12" (28.4)	1.89" (48.1)	1.89" (48.1)
PLF666MRTN - 1	3/8" 3/8" 3/8"	0.250" (6.35)	3.07" (78.1)	1.18" (30.0)	1.89" (48.1)	1.89" (48.1)
PLF686MRTN - 1	3/8" 1/2" 3/8"	0.250" (6.35)	3.31" (84.2)	1.42" (36.1)	1.89" (48.1)	1.89" (48.1)
PLF868MRTN - 1	1/2" 3/8" 1/2"	0.375" (9.53)	3.24" (82.4)	1.18" (30.0)	2.06" (52.4)	2.06" (52.4)
PLF888MRTN - 1	1/2" 1/2" 1/2"	0.375" (9.53)	3.48" (88.5)	1.42" (36.1)	2.06" (52.4)	2.06" (52.4)
PLF12812MRTN - 1	3/4" 1/2" 3/4"	0.625" (15.88)	3.73" (94.8)	1.42" (36.1)	2.31" (58.8)	2.31" (58.8)
PLF121212MRTN - 1	3/4" 3/4" 3/4"	0.625" (15.88)	3.88" (98.6)	1.57" (39.9)	2.31" (58.8)	2.31" (58.8)



FUSION WELD X PRO-FLARE TEE							
Part Number	Pipe x Pipe x Tube X x Y x Z	Orifice(mm)	A(mm)	ØB(mm)	ØC(mm)	D(mm)	E(mm)
FW-888FN - 1	1/2" 1/2" 1/2"	0.375" (9.53)	4.60" (116.8)	0.840" (21.34)	0.607" (15.42)	1.50" (38.1)	2.22" (56.5)
FW-121212FN - 1	3/4" 3/4" 3/4"	0.625" (15.88)	4.60" (116.8)	1.050" (26.67)	0.809" (20.55)	1.50" (38.1)	2.32" (59.0)