



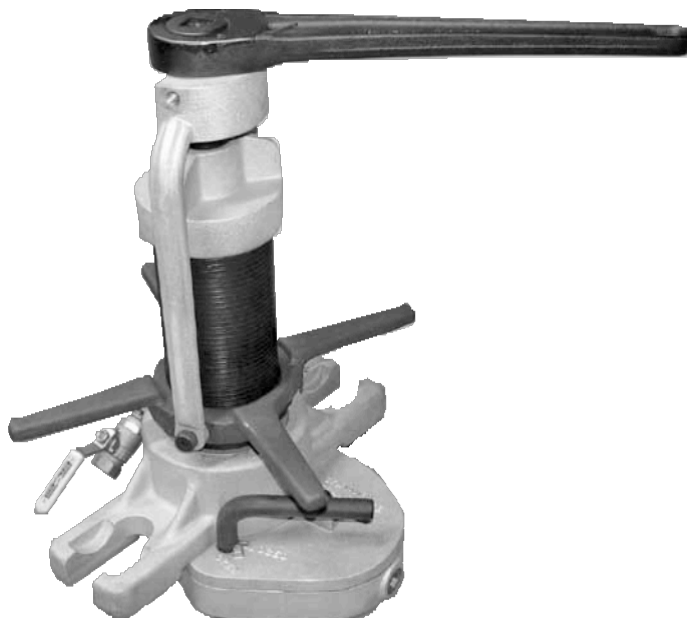
Transmate

B-Too™ Drilling and Tapping Machine

Material Specifications

- Powered by hand or with Ridgid 690 (TM-29)
- High strength, modular aluminum and steel components
- Inserts any 3/4" to 1" corporation stop under pressure
- Extracts threaded corporation stops from the main and inserts a main plug
- Uses Mueller B101 saddles, drill/taps, ratchets, chain holders, chains and screw plugs

3/4" to 1" range of cuts



Short Compact Design

Provides greater stability when cutting with the drill tap and easier alignment when inserting the corporation stop.

Can be used on water pressures up to 250 psi without additional fittings or components.

ITEM NO.	DESCRIPTION	PRICE
356-00	B-Too Tapping Machine for Direct Insertion	\$4,081.13
353-60-32	1/4" Hex Wrench	included
353-10-1	Tapping Compound	included
356-61	Tool Box	included
see pages TM-16 and TM-17 for complete list of components		

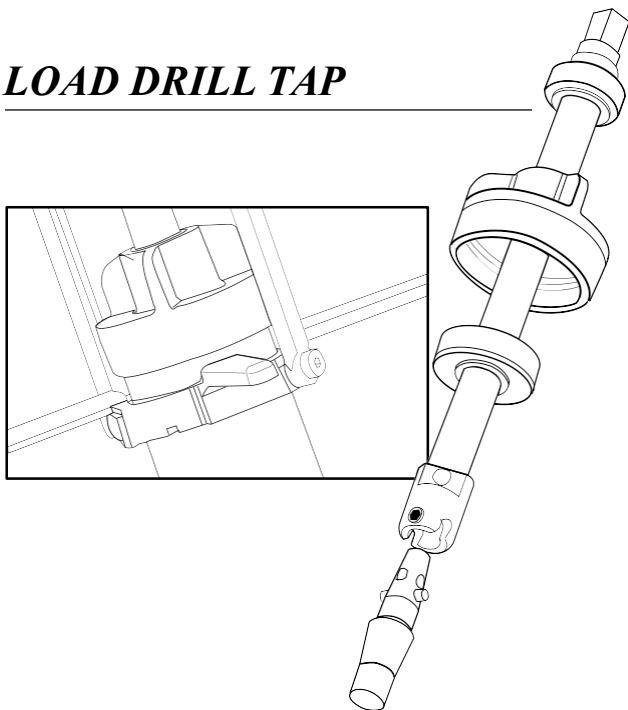
To Order

1. Order B-Too Drilling Machine.
2. Order Drill/Taps per desired tap size, thread type and pipe type. Drill/Tap corresponds to body inlet threads on corporation stop.
3. Order Screw Plug Body (356-22-01) and Quick Release Screw Plugs with threads matching the body outlet threads of the corporation stops used. See chart to match screw plugs to bodies. (see page TM-17)
4. Order a pipe saddle for each size of pipe the B-Too will be used on. One extra chain section (Item Number 356-11) required for 18" - 30" mains, two extra chain sections required for 32" - 48" mains.
5. Order Power Unit if desired.
6. Order extra Tapping Compound if needed. (see pg. TM-30)

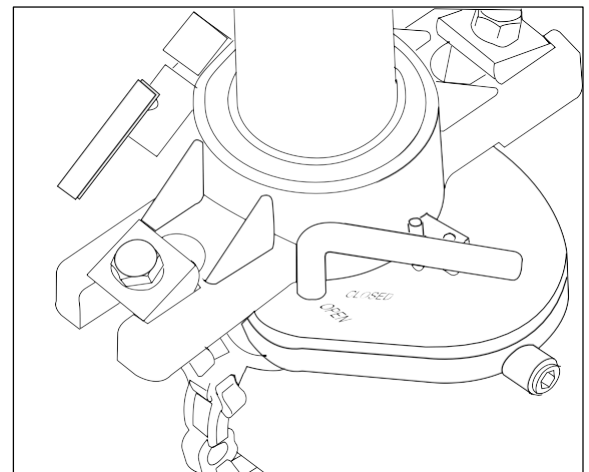


*The rugged, lightweight **B-Too™** makes drilling and tapping a pipe as simple as these steps...*

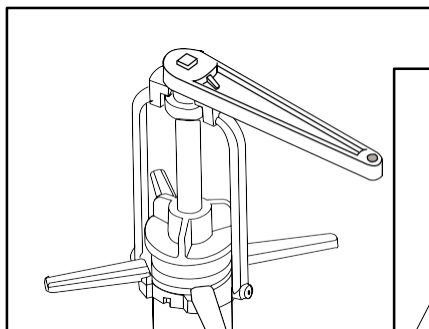
LOAD DRILL TAP



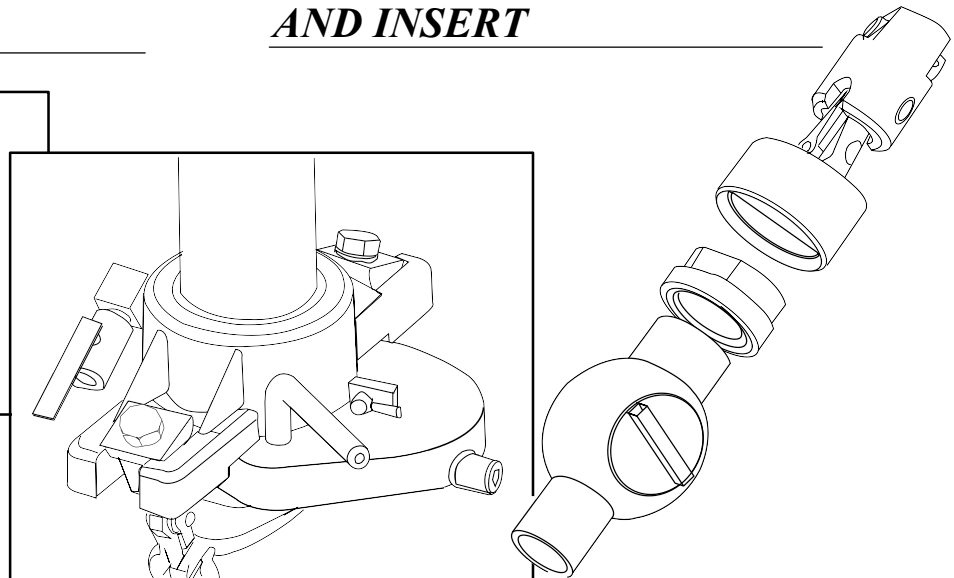
MOUNT ON PIPE



DRILL / TAP



PREPARE CORPORATION STOP AND INSERT

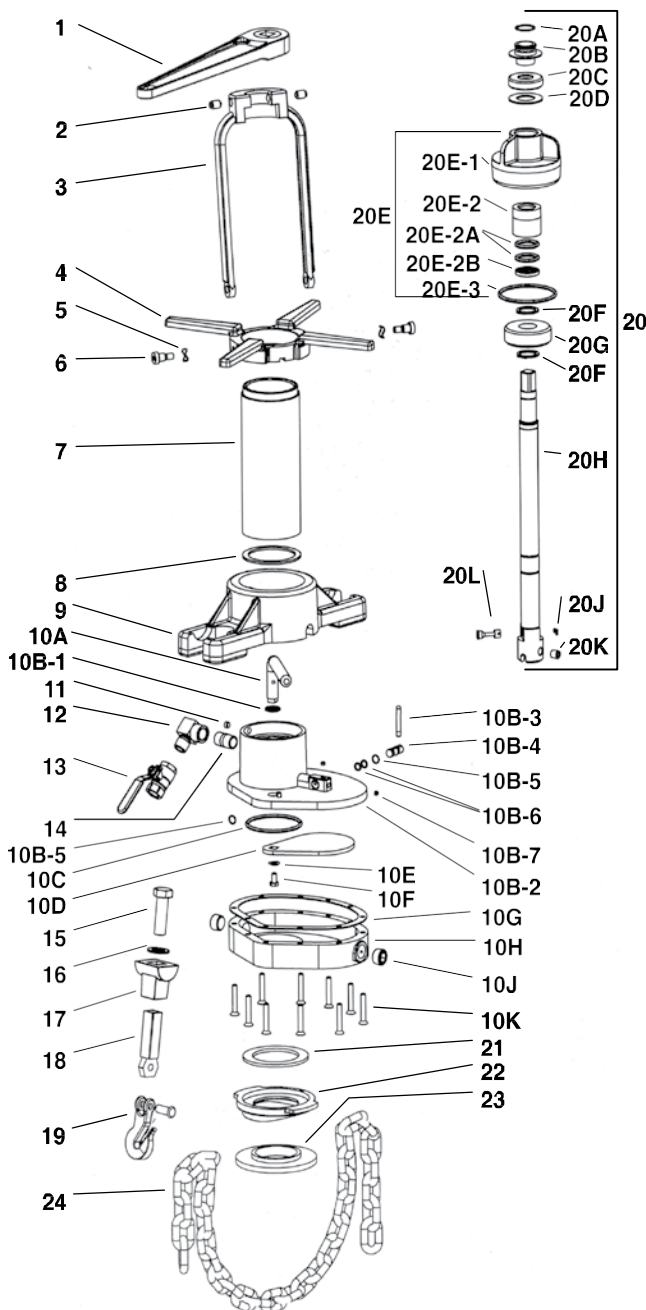




Transmate

B-Too™ Drilling and Tapping Machine

B-Too™ Drilling and Tapping Machine Parts Drawing & List




REF. NO.	ITEM NO.	DESCRIPTION	LIST PRICE
1	356-19	Ratchet Wrench (13/16")	\$280.58
2	356-06-02	Yoke Plunger, Vlier Std. (2 req'd)	ea. 16.19
3	356-06	Yoke	161.44
4	356-07	Feed Nut	156.33
5	356-06-03	Yoke Bolt Washer (2 req'd)	ea. 5.17
6	356-06-01	Yoke Bolt, 1/2" x 1/2" socket (2 req'd)	ea. 5.09
7	356-05	Barrel	194.29
8	356-08-03	Gasket, Slide Gate to Barrel	15.68
9	356-12	Clamp	186.05
10	356-01A	Slide Gate Assembly	817.10
10A	356-02	Slide Gate Disk Handle	120.07
10B	356-03A	Slide Gate Top Assembly	477.20
10B-1	356-02-01	Slide Gate Handle O-ring	3.63
10B-2	356-03	Slide Gate Top	314.92
10B-3	356-20-10	By-Pass Valve: 1/4" Spool Lever	30.76
10B-4	356-20-1	By-Pass Valve: 1/4" Spool	67.86
10B-5	356-20-09	By-Pass Valve: 1/4" Spool Retaining Ring (2 req'd)	ea. 1.24
10B-6	356-20-08	By-Pass Valve: 1/4" Spool O-ring	1.24
10B-7	356-03-01	Slide Gate Top Plug 1/16" NPT Plug (2 req'd)	ea. 1.24
10C	356-04-01	Slide Gate Disk O-ring	3.86
10D	356-04	Slide Gate Disk	110.62
10E	356-04-03	Disk Handle Washer	5.25
10F	356-04-04	Slide Gate Disk Screw	1.24
10G	356-08-02	Gasket Slide Gate	40.80
10H	356-01	Slide Gate Bottom	251.75
10J	356-01-02	Slide Gate Bottom Plug (2 req'd) 3/4" NPT	ea. 3.11
10K	356-03-05	Slide Gate Screw (10 req'd)	ea. 1.24
11	356-03-03	Slide Gate Top to Barrel Set Screw	1.24
12	356-03-04	Exhaust Elbow	17.09
13	371-02	Exhaust Valve	22.96
14	356-01-03	Slide Gate Pipe Nipple	2.17
15	356-14-02	Swivel Bolt for Rd. Link Chain (2 req'd)	ea. 5.95
16	8FW-Z12	Zinc Plated Washer 3/4" (2 req'd)	ea. 1.05
17	356-15	Hook Holder (2 req'd)	ea. 58.30
18	356-16	Hook Link (2 req'd)	ea. 74.97
19	356-11-01	Round Link Chain Hook (2 req'd)	ea. 23.49
20	356-10A	Holder Assembly	865.51
20A	356-21	Spiral Snap Ring	6.22
20B	356-17	Stop Collar	83.08
20C	355-56	Thrust Bearing	41.65
20D	356-18	Shaft Support Thrust Washer	58.30
20E	356-08A	Cap Assembly	228.17
20E-1	356-08	Cap only	165.50
20E-2	356-09A	Holder Bushing Assembly	72.67
20E-2a	356-09-01	Holder Bushing O-ring (2 req'd)	ea. 1.24
20E-2b	356-09-02	Holder Bushing Wiper	16.30
20E-3	356-08-01	Cap O-ring	1.86
20F	350-20-54	Shaft End Snap Ring (2 req'd)	ea. 11.89
20G	356-13	Holder Guide	26.76
20H	356-10	Holder	285.54
20J	353-11-506	Holder Cotter Pin	1.43
20K	353-11-514	Holder Socket Head Set Screw	2.17
20L	353-11-505	Holder Knockout Pin	50.07
21	356-08-04	Top Saddle Gasket	16.07
22	356-23-xx	B-Too Saddle xx Mueller Style (See following page)	
23	353-57-084	4" Bottom Saddle Gasket for 4" and larger	47.28
	353-57-083	3" Bottom Saddle Gasket, (Not Included)	20.88
	353-57-082	2" Bottom Saddle Gasket, (Not Included)	36.19
24	356-11	Chain, Round Link	66.99
Not Illustrated:			
	353-60-32	1/4" Hex Wrench	5.05
	353-10-1	Tapping Compound	31.68
	356-61	Tool Box	580.27



Transmate

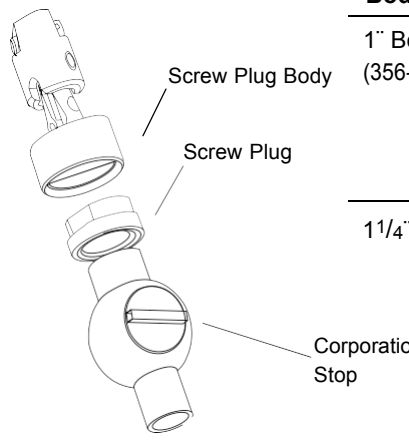
B-Too™ Drilling and Tapping Machine Parts List

ITEM NUMBER	DESCRIPTION	LIST PRICE	ITEM NUMBER	DESCRIPTION	LIST PRICE	
PVC Drills and Taps (requires both Cutter and Tap)			Pipe Saddles			
For PVC only	355-01-210	Cutter, PCV 3/4": 5957 (AWWA CC thread)	356-23-02	*B-Too, Saddle 2" Mueller Style	\$58.30	
	353-04-206	Tap, 3/4" PVC: 5956 (AWWA CC thread)	356-23-03	*B-Too, Saddle 3" Mueller Style	58.30	
	353-01-206	Cutter, 1" PVC: 5975-1 (AWWA CC thread)	356-23-04	B-Too, Saddle 4" Mueller Style	58.30	
	353-04-208	Tap, 1" PVC: 5956 (AWWA CC thread)	356-23-06	B-Too, Saddle 6" Mueller Style	58.30	
	353-03	Drill Tap Roll Pin	1.83	356-23-08	B-Too, Saddle 8" Mueller Style	58.30
Drill/Taps			356-23-10	B-Too, Saddle 10" Mueller Style	58.30	
For Ductile Cast Iron & A/C	353-02-106	Drill/tap, 3/4" IP: 5951 (IP thread)	427.25	356-23-12	B-Too, Saddle 12" Mueller Style	58.30
	353-02-108	Drill/tap, 1" IP: 5951 (IP thread)	453.15	356-23-14	B-Too, Saddle 14" Mueller Style	58.30
	353-02-206	Drill/tap, 3/4" CC: 5950, 5952 (AWWA thread)	302.36	356-23-16	B-Too, Saddle 16" Mueller Style	58.30
	353-02-208	Drill/tap, 1" CC: 5950, 5952 (AWWA thread)	413.42	356-23-18	B-Too, Saddle 18" Mueller Style	58.30
	353-03	Drill Tap Roll Pin	1.83	356-23-20	B-Too, Saddle 20" Mueller Style	58.30
Screw Plugs (other thread forms available upon request)			356-23-24	B-Too, Saddle 24" Mueller Style	58.30	
356-22-01	B-Too, Quick Release Screw Plug Body 1"	199.89	* must order bottom saddle gasket, see TM-16			
356-22-02	B-Too, Quick Release Screw Plug 1" Coarse Thread Compression	158.26	30" - 60" SADDLES ALSO AVAILABLE			
356-22-03	B-Too, Quick Release Screw Plug 1" MIP	158.26	Tapping Compound			
356-22-04	B-Too, Quick Release Screw Plug 1" Drive Thread	158.26	353-10-1	Tapping Compound	31.68	
356-22-05	B-Too, Quick Release Screw Plug 1" FIP	158.26	353-10-3	Tapping Compound / Case (12)	365.37	
356-22-06	B-Too, Quick Release Screw Plug 3/4" Coarse Thread Compression	158.26	Power Option			
356-22-07	B-Too, Quick Release Screw Plug 3/4" FIP	158.26	373-356	Ridgid 690 Electric Drive w/ 13/16" sq. drive adapter	2,874.32	
356-22-08	B-Too, Quick Release Screw Plug 3/4" MIP	158.26	370-70	GF-15 Ground Fault Interrupter Plug (required)	123.00	
356-22-09	B-Too, Quick Release Screw Plug 3/4" Drive Thread	158.26				
356-22-10	B-Too, Quick Release Screw Plug Body 1-1/4" 1	233.05				
356-22-11	B-Too, Quick Release Screw Plug 1-1/4" Coarse Thread Compression 1	183.24				
356-22-12	B-Too, Quick Release Screw Plug 1-1/4" FIP 1	183.24				
356-22-13	B-Too, Quick Release Screw Plug 1" Fine Thread Compression	158.26				
356-22-14	B-Too, Quick Release Screw Plug 3/4" Fine Thread Compression	158.26				

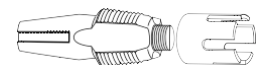
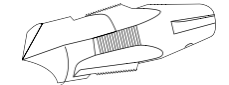
¹ For use on 1" Corporations with 1-1/4" outlet threads.

Screw Plug Chart

Body Size	Screw Plugs that fit
1" Body (356-22-01)	1" Compression
	3/4" Compression
	1" FIP
	3/4" FIP
	1" MIP
	3/4" MIP
1 1/4" Body	1" Drive Thread
	3/4" Drive Thread
	1" Mueller Thread
	3/4" Mueller Thread
1 1/4" Body	1 1/4" Compression
	1 1/4" FIP



Cutting Drill/Taps

355-01-210 PVC Cutter 3/4" CC
353-04-206 PVC Tap 3/4" CC

353-01-206 PVC Cutter 1" CC
353-04-208 PVC Tap 1" CC

Iron pipe thread or AWWA Thread