

Cast Iron Floor Box

TRUMBULL FLOOR BOXES are designed for installation in concrete floors or slabs to provide support for extension stems for non-rising type valves, and to provide a cover over the operating nut on the extension stem.

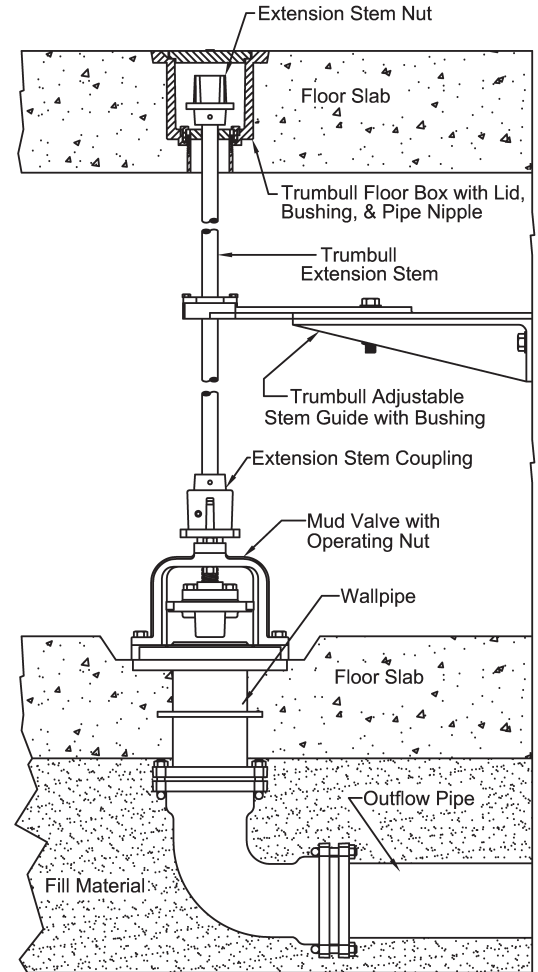
Trumbull cast iron Floor Boxes are designed for varying slab thicknesses. Overall length is 6", but the underside is tapped to accept 2-1/2" NPT steel pipe nipples for floors thicker than 6". When it's necessary to convert a Floor Box to thicker floors, use a 2-1/2" pipe nipple, 1/2" longer than the increase required, as the threads on the underside of the Floor Box are 1/2" deep. For example, for an 8" floor thickness use a 2-1/2" x 2-1/2" nipple. For a 10" floor, use a 2-1/2" x 4-1/2" nipple.

When a stem is required that is larger than the 2-1/2" pipe I.D., a 3" pipe nipple will be welded to the bottom of the Floor Box.

All Trumbull Floor Boxes should be ordered with a removable brass bushing for which the maximum drilling is normally 2-3/8" diameter. For larger diameters, please contact Trumbull. However, when used with floors thicker than 6", clear opening is limited to the I.D. of the pipe nipple. See reverse side for drawing.



| Trumbull Item No. | Weight |
|-------------------|------------|
| 367-4620 | 25.65 lbs. |



Typical Floor Box installation

Bushings are also available in:

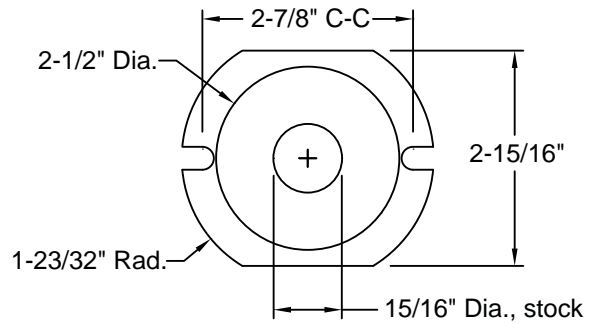
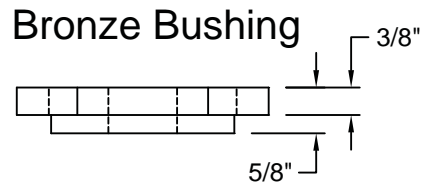
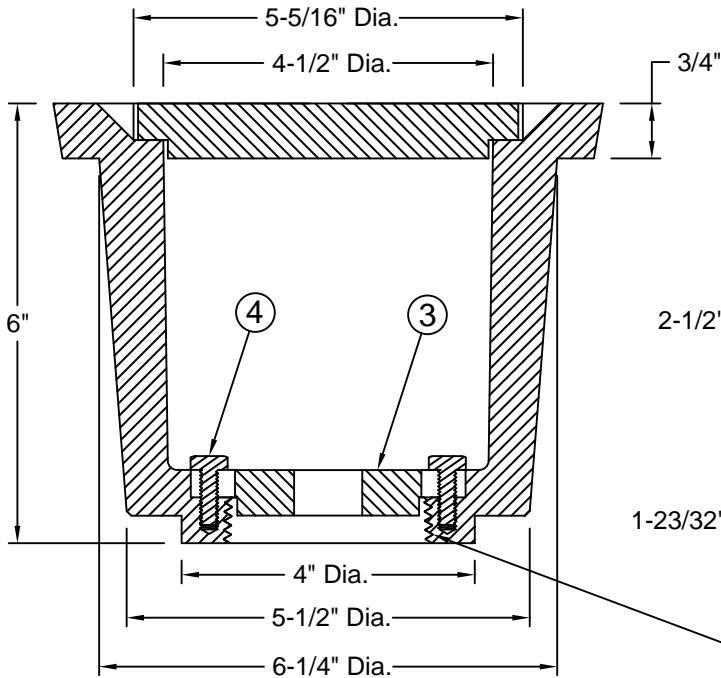
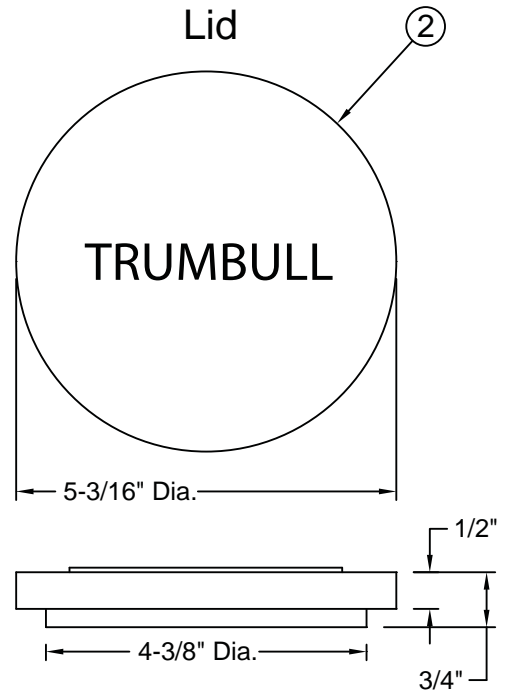
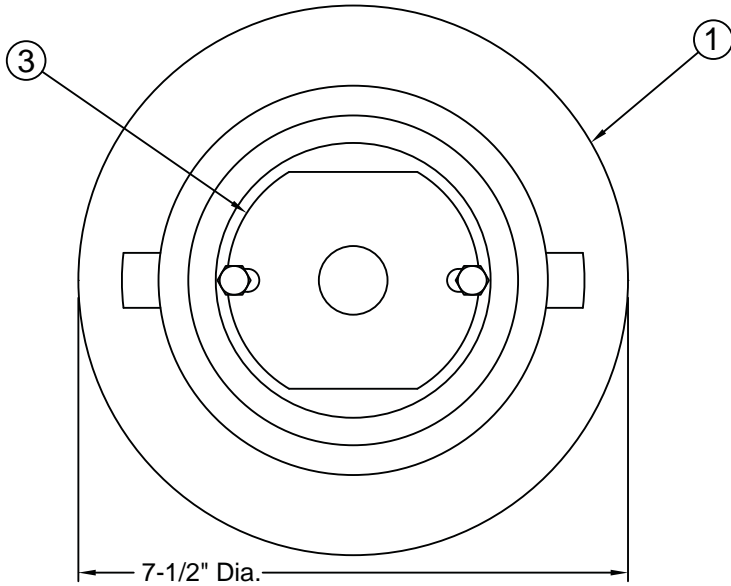
- No-lead brass, per C89833
- Ultra High Molecular Weight Polyethylene (UHMWPE)
- NSF 61 approved polymer (Ryton® R-4)

Ordering Instructions

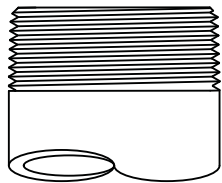
1. Quantity required
2. Thickness of floor slab, or length of pipe nipple required
3. O.D. of stem being used, or desired bushing material & hole size
4. Custom options available such as stainless steel construction, O-Ring lids, water-tight seals, tamper-resistant lids & anchoring collar

When a Valve Position Indicator is installed in a floor, use the cast iron **HOUSING ADAPTER** illustrated on pages F-1 to F-8, or the **SEALED FLOOR BOX** shown on pages G-13 and G-14.

| Item | Component | Material |
|------|-----------------|---------------------------|
| 1 | Body | Cast Iron, A126(B) |
| 2 | Lid | Cast Iron, A126(B) |
| 3 | Bushing | Bronze, B584 |
| 4 | Screw, Hex Head | Stainless Steel, Type 316 |



The bottom of the Floor Box casting is tapped with a 2-1/2" N.P.T. thread.



Use a pipe nipple 1/2" longer than the increase in floor slab thickness required, as the tapped thread is 1/2" deep.

Coated with black enamel rust preventative.

| | | |
|--------|-------------------|------------|
| Drawn: | Drawing Revision: | |
| Date | Rev. | Date |
| 4/4/94 | J | 04/07/2015 |

TRUMBULL INDUSTRIES

P.O. Box 1556
1040 N. Meridian Rd.
Youngstown, Ohio 44501

Drawn to Scale

CAST IRON FLOOR BOX

Sealed Floor Boxes

Available in Cast Stainless Steel & Carbon Steel

TRUMBULL SEALED FLOOR BOXES are ideal to prevent fluids from penetrating the floor slab from either direction. Top side is sealed by an o-ring, and bottom side can be sealed by use of optional packing gland. Overall length is 11-1/8", but the underside is tapped to accept 2-1/2" NPT steel pipe nipples for floors thicker than 11". When it's necessary to convert a Floor Box to thicker floors, use a 2-1/2" pipe nipple, 1/2" longer than the increase required, as the threads on the underside of the Floor Box are 1/2" deep.



SOCKET HEAD CAP SCREWS

furnished standard (tamper-resistant fasteners and installation tools also available)

O-RING

Seals Floor Box at top of floor (furnished as standard)

OVERALL HEIGHT

11-1/8" with lid

Floor Boxes

| Material | Trumbull Item No. | Weight |
|--------------------------|-------------------|------------|
| Cast Carbon Steel* | 367-4622 | 31.05 lbs. |
| Cast 316 Stainless Steel | 367-4621 | 33.45 lbs. |

* Carbon steel models are EDP coated.

Optional Accessories

| Description | Trumbull Item No. | Weight |
|------------------|-------------------|-----------|
| SS Packing Gland | spec/ord | 2.10 lbs. |
| Brass Bushing | spec/ord | 1.75 lbs. |

See Pages F-7 and F-8 for Trumbull Valve Position Indicator installation in floors.

Other Optional Accessories

PACKING GLAND

with stainless steel follower seals bottom of Floor Box

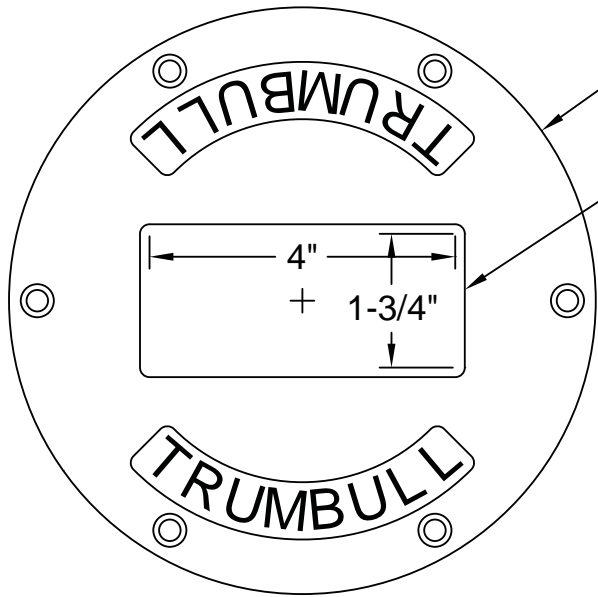
BRASS BUSHING

aligns extension stem when bottom seal is not utilized

POSITION INDICATOR

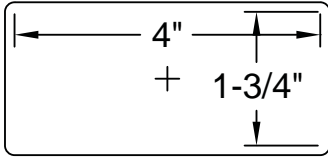
can be used with either brass bushing or packing gland





7-11/16", Lid diameter

Flat surface for custom nameplate or valve tag; consult Trumbull.



Lid Fasteners

Lid

O-Ring Lid Seal

Floor Box Canister

2" Operating Nut, optional

Position Indicator, optional

Fasteners, optional

Bushing, optional

Notes:

Canister, Lid, and fasteners are T316 stainless. Also available in cast carbon steel. Carbon steel model is EDP coated. Available plain, with Bushing, or Packing Gland. For Bushing, specify bore dia. desired. For Packing Gland, specify Stem Dia. and type of Packing Material required. Pipe nipple for extending length is not furnished. Lid O-Ring and fasteners are included. Position Indicator is a recommended option.

The bottom of the Floor Box casting is tapped with a 2-1/2" N.P.T. thread.

11-1/8" overall

Pipe Nipple optional

Valve Stem, optional

| | | |
|-----------|-------------------|------------|
| Drawn: | Drawing Revision: | |
| Date | Rev. | Date |
| 5/29/2014 | C | 04/25/2015 |

TRUMBULL INDUSTRIES
 P.O. Box 1556
 1040 N. Meridian Rd.
 Youngstown, Ohio 44501

Drawn to Scale
SEALED FLOOR BOX
T316 STAINLESS STEEL