



FLOORSTANDS & PEDESTALS

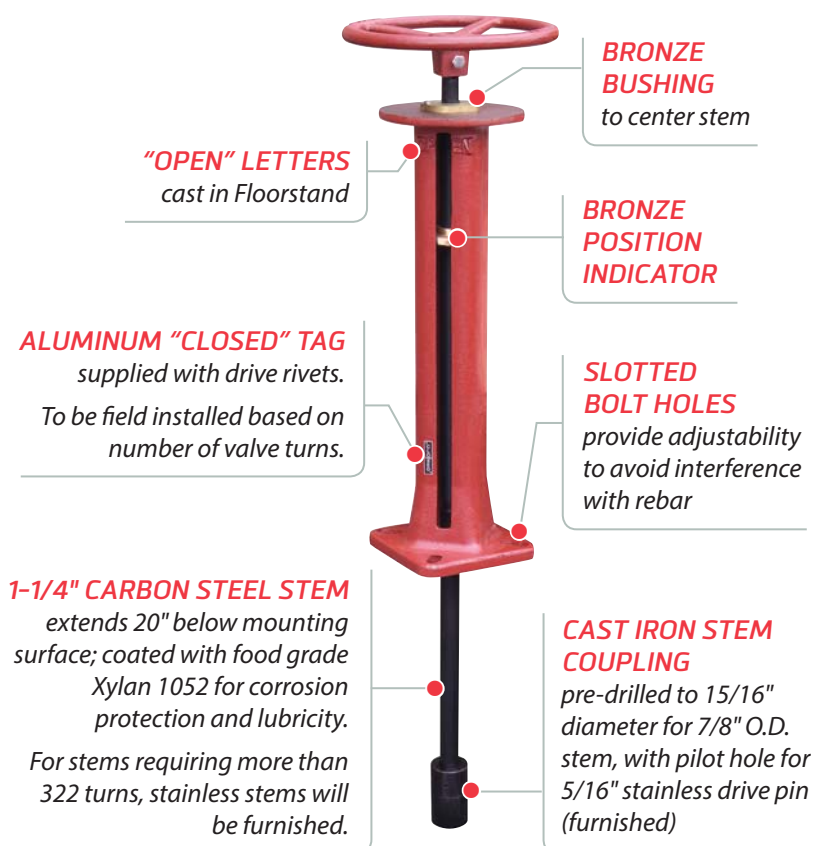
WITH RELATED ACCESSORIES



30" INDICATING FLOORSTAND

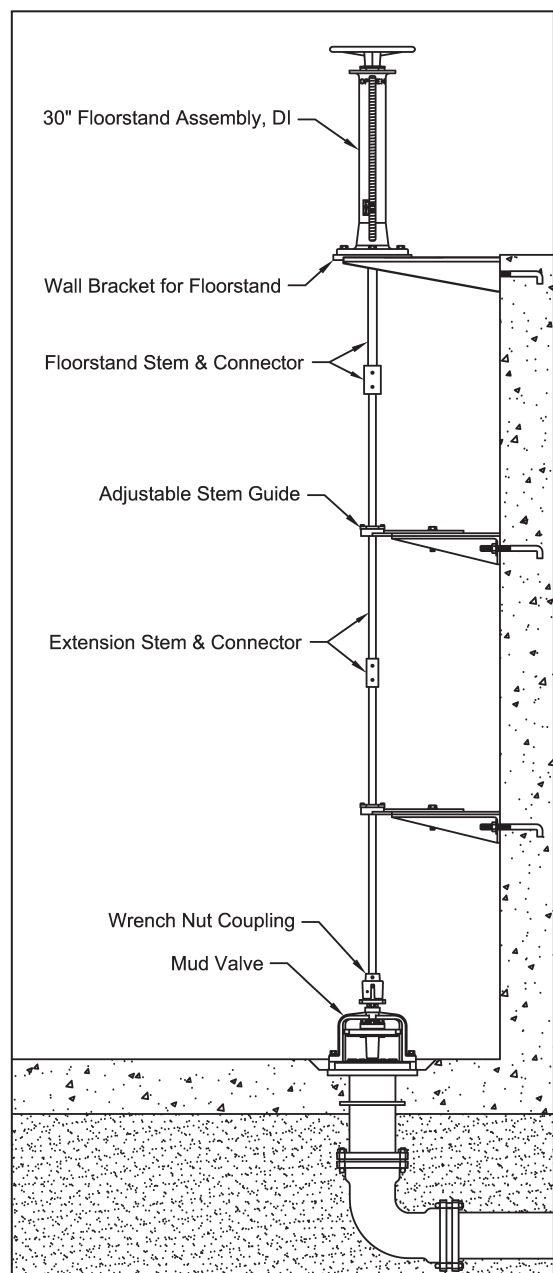
Ductile Iron

TRUMBULL 30" INDICATING FLOORSTANDS are designed for installation in treatment plants and pump stations to allow operation of valves at a lower elevation. Floorstand body is ductile iron for increased torque capacity. Set screw secures handwheel to stem. Flange can be machined to facilitate mounting of actuator, if required (also available with gear operators). Standard stem threading allows up to 140 turns; optional threading allows up to 563 turns. Stainless drive pin supplied with assembly. See page 9 for custom Floorstand options.



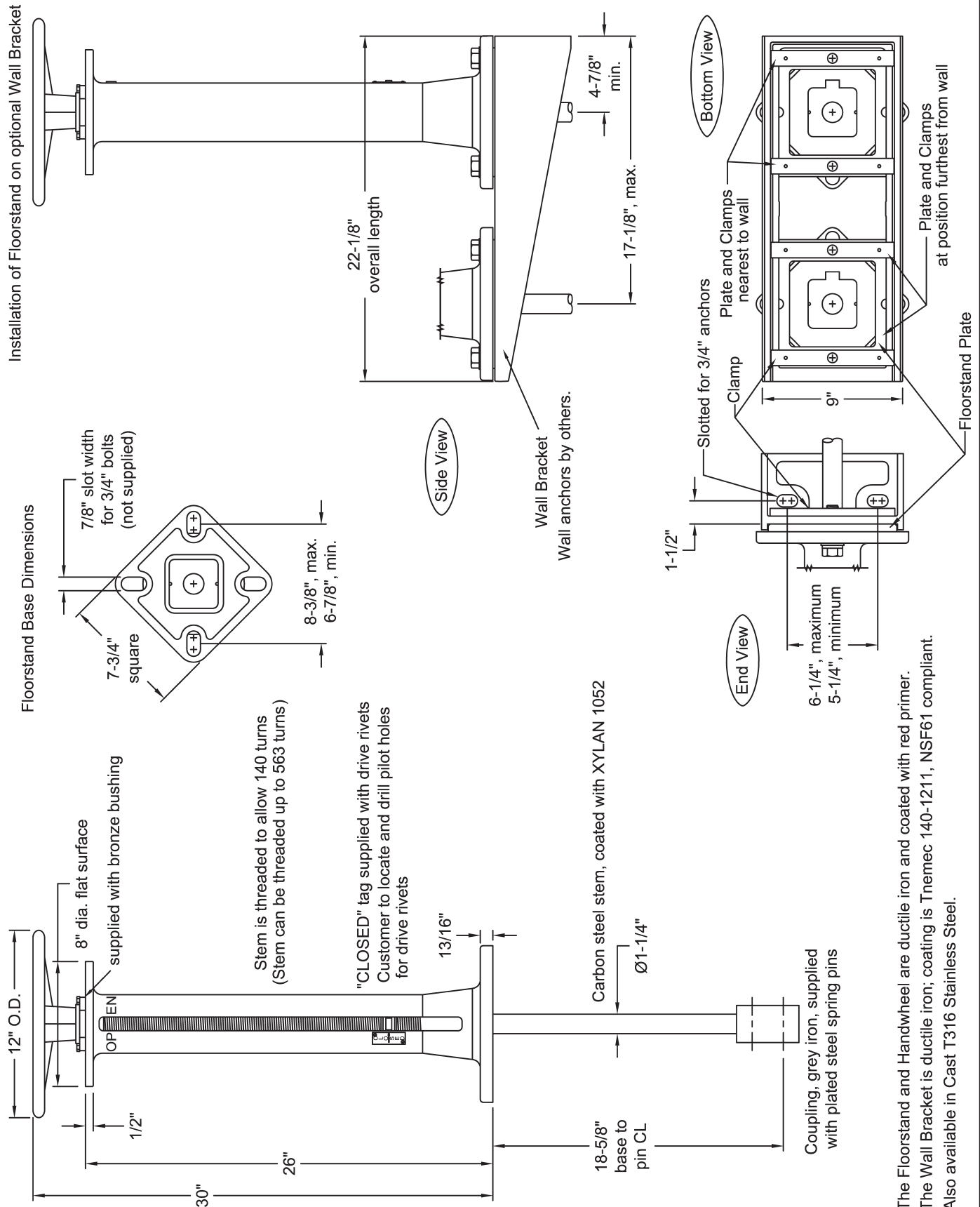
Ordering Instructions

1. Quantity required
2. Floorstand item number: **367-2420**
3. O.D. of extension stem being used, for drilling of connecting couplings
4. Wall Bracket, if required
 - a. Ductile iron item number: **367-2451**
 - b. Stainless steel item number: **367-2461**



Typical Floorstand installation

TOP



The Floorstand and Handwheel are ductile iron and coated with red primer.
The Wall Bracket is ductile iron; coating is Tnemec 140-1211, NSF61 compliant.
Also available in Cast T316 Stainless Steel.

Drawn:	Drawing Revision:	
Date	Rev.	Date
5/20/08	E	1/3/2011

TRUMBULL INDUSTRIES

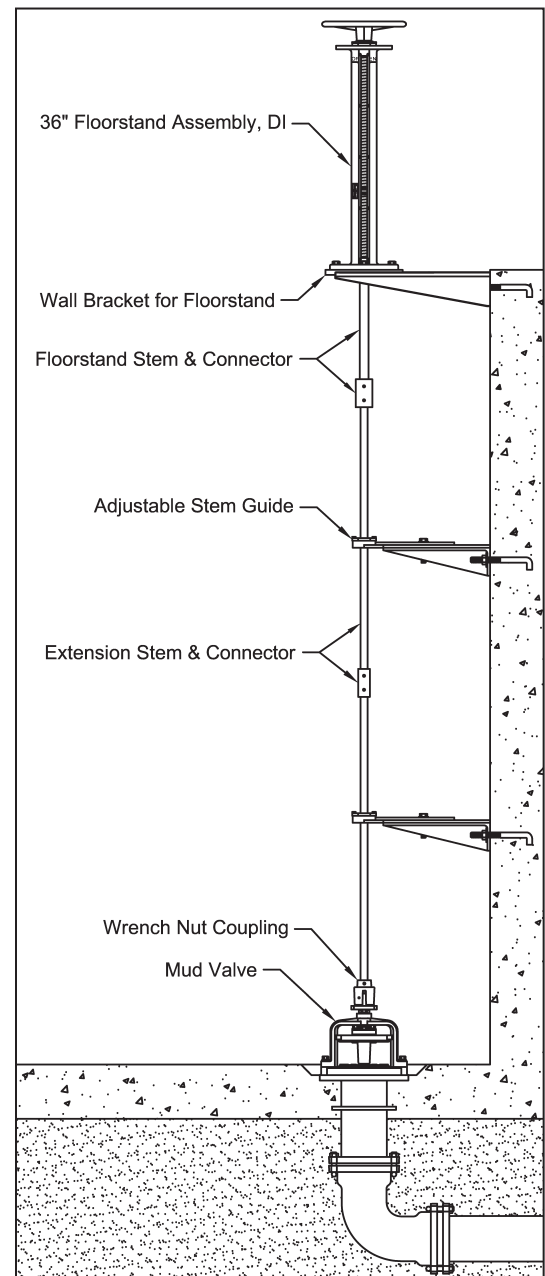
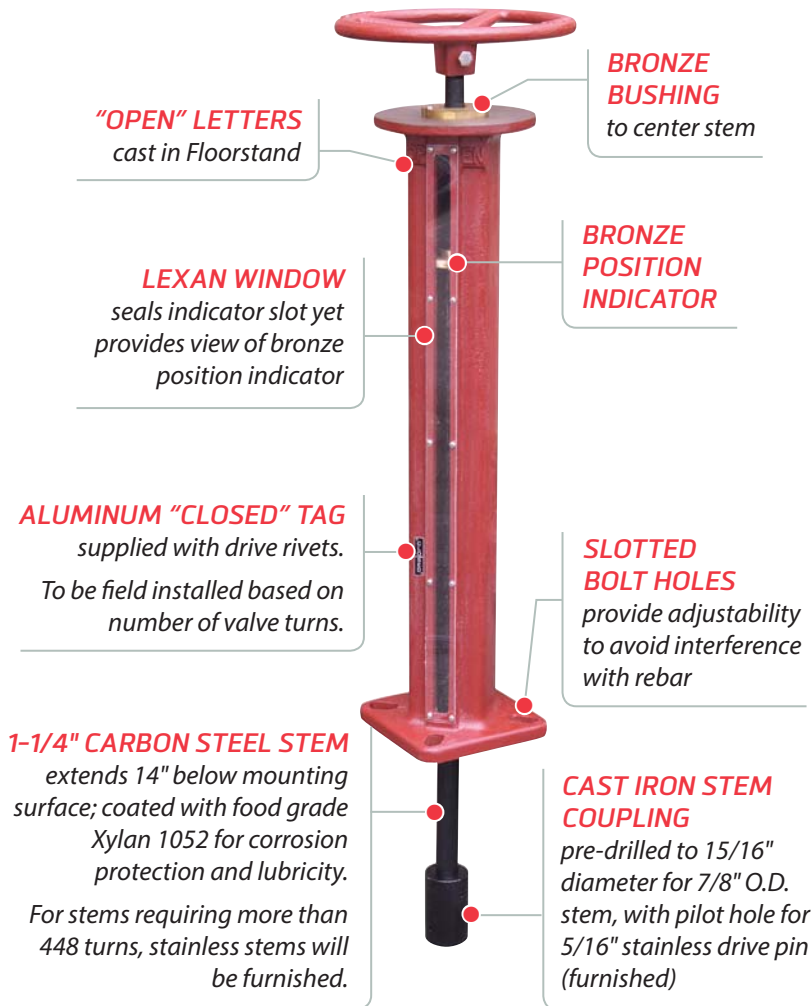
P.O. Box 1556
1040 N. Meridian Rd.
Youngstown, Ohio 44501

Drawn to Scale
INDICATING FLOORSTAND 30" DUCTILE IRON

36" INDICATING FLOORSTAND

Ductile Iron – Sealed Indicator Slot

TRUMBULL 36" DUCTILE IRON INDICATING FLOORSTANDS are designed for installation in treatment plants and pump stations to allow operation of valves at a lower elevation. Set screw secures handwheel to stem. Flange can be machined to facilitate mounting of actuator, if required (also available with gear operators). Standard stem threading allows up to 196 turns; optional threading allows up to 784 turns. Stainless drive pin supplied with assembly. See page 9 for custom Floorstand options.

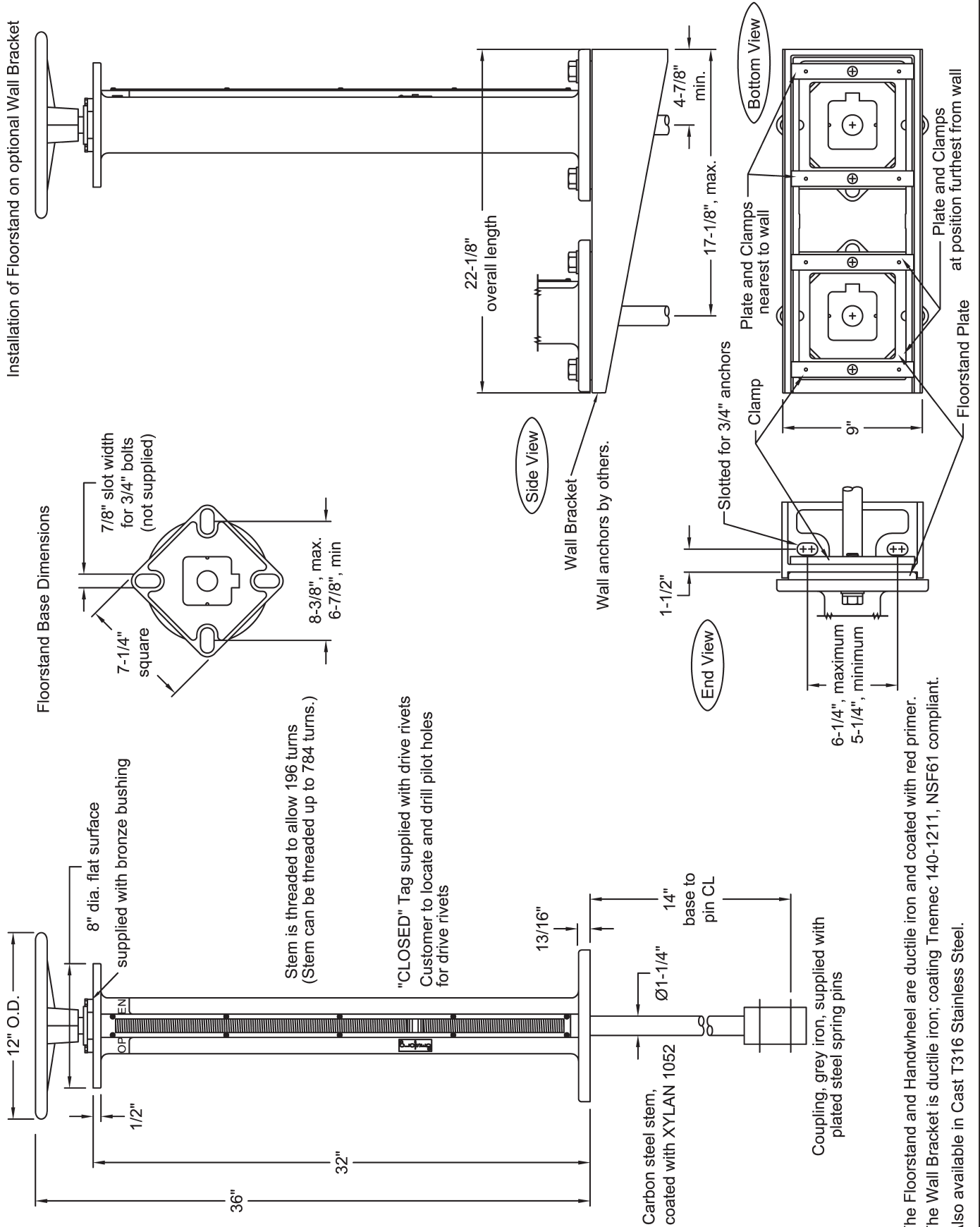


Typical Floorstand installation

Ordering Instructions

1. Quantity required
2. Floorstand item number: **367-2421**
3. O.D. of extension stem being used, for drilling of connecting couplings
4. Wall Bracket, if required
 - a. Ductile iron item number: **367-2451**
 - b. Stainless steel item number: **367-2461**

TOP



The Floorstand and Handwheel are ductile iron and coated with red primer.
 The Wall Bracket is ductile iron; coating Tnemec 140-1211, NSF61 compliant.
 Also available in Cast T316 Stainless Steel.

Drawn:	Drawing Revision:	
Date	Rev.	Date
5/20/08	G	11/11/2012

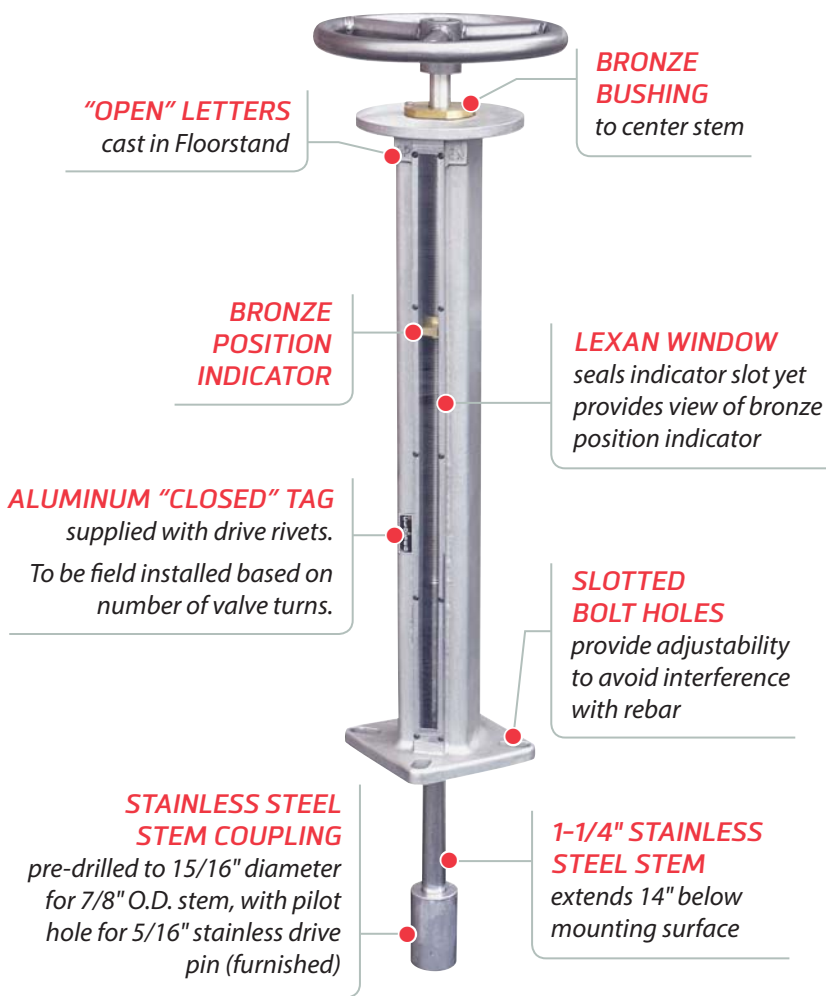
TRUMBULL INDUSTRIES
 P.O. Box 1556
 1040 N. Meridian Rd.
 Youngstown, Ohio 44501

Drawn to Scale
INDICATING FLOORSTAND 36" DUCTILE IRON

STAINLESS INDICATING FLOORSTAND

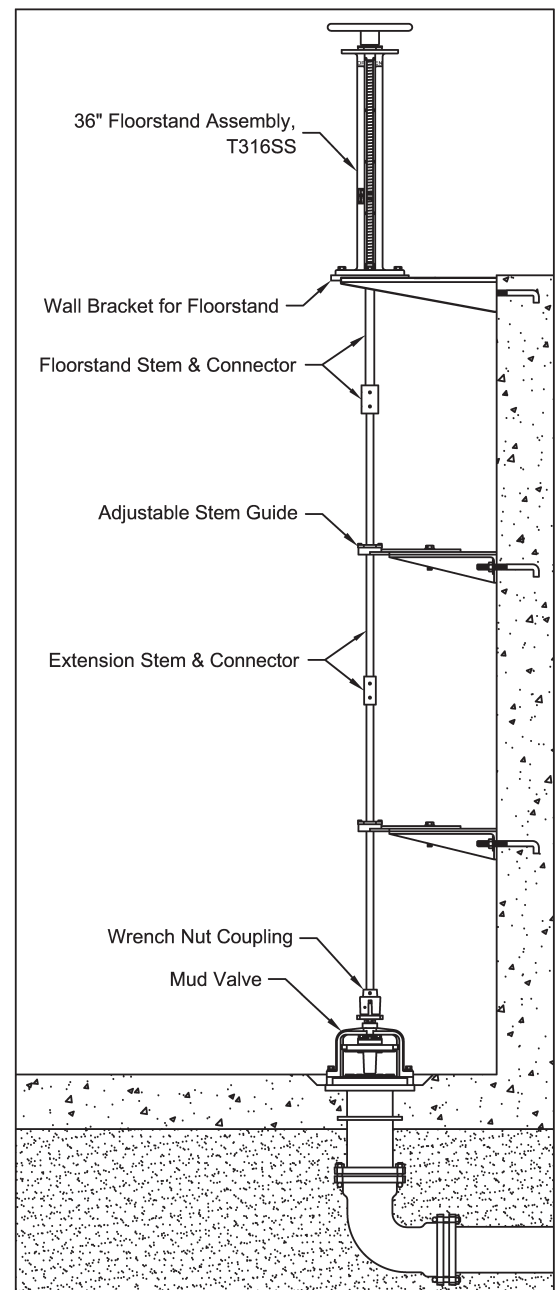
36" Length with Sealed Indicator Slot

TRUMBULL 36" STAINLESS STEEL INDICATING FLOORSTANDS are designed for installation in treatment plants and pump stations to allow operation of valves at a lower elevation. Stainless steel drive pin secures handwheel to stem. Flange can be machined to facilitate mounting of actuator, if required (also available with gear operators). Standard stem threading allows up to 196 turns; optional threading allows up to 784 turns. See page 9 for custom Floorstand options.



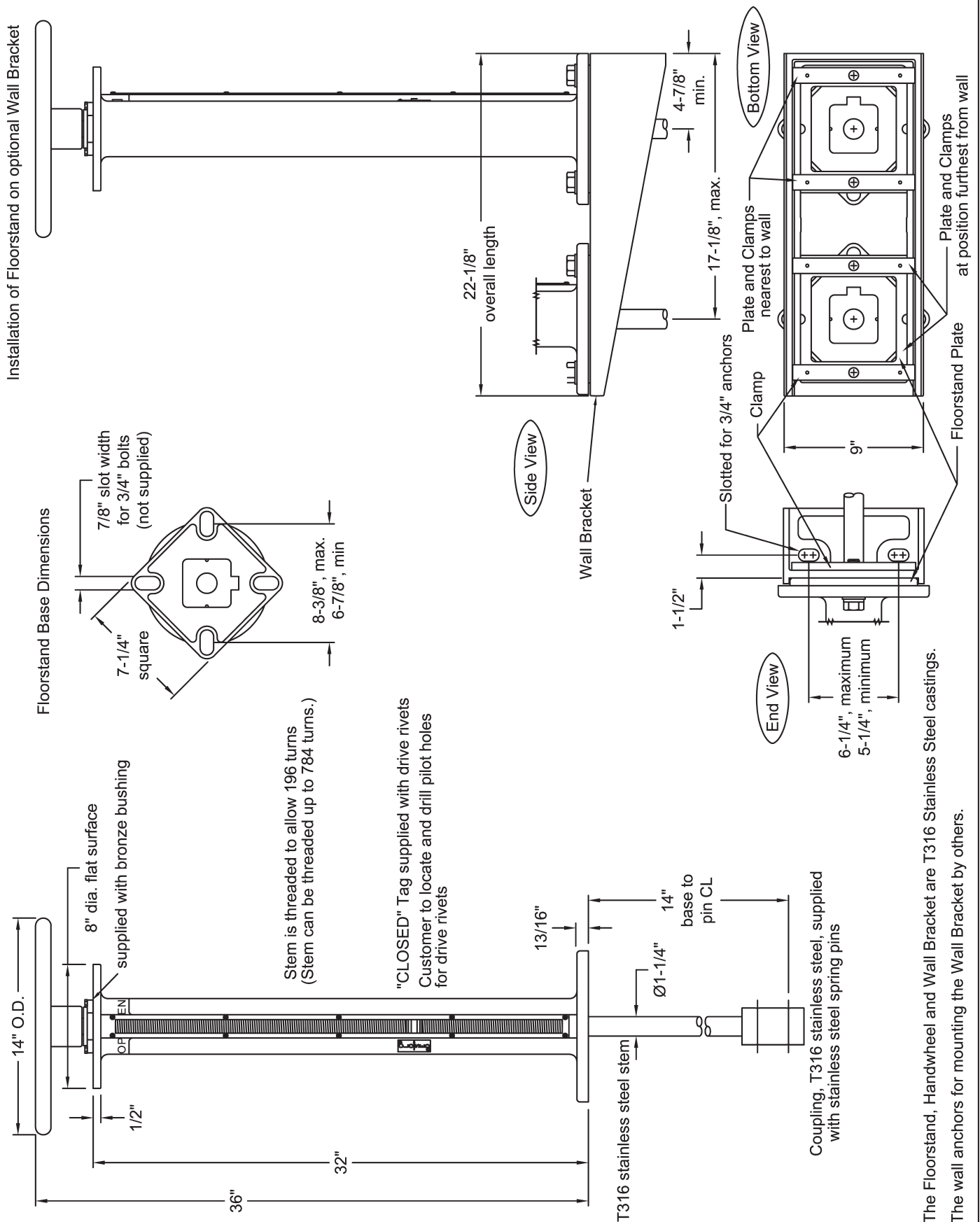
Ordering Instructions

1. Quantity required
2. Floorstand item number: **367-2431**
3. O.D. of extension stem being used, for drilling of connecting couplings
4. Stainless steel Wall Bracket, if required: item number: **367-2461**



Typical Floorstand installation

TOP



The Floorstand, Handwheel and Wall Bracket are T316 Stainless Steel castings. The wall anchors for mounting the Wall Bracket by others.

Drawn:	Drawing Revision:	
Date	Rev.	Date
5/20/08	G	11/11/2012

TRUMBULL INDUSTRIES
P.O. Box 1556
1040 N. Meridian Rd.
Youngstown, Ohio 44501

Drawn to Scale
INDICATING FLOORSTAND 36" STAINLESS STEEL

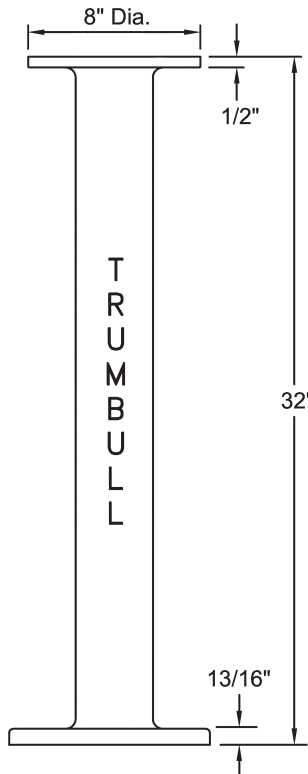
Multi-Purpose ... MANY POSSIBILITIES!

32" DUCTILE IRON PEDESTAL

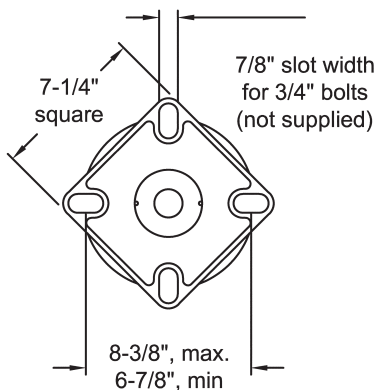
TRUMBULL 32" DUCTILE IRON PEDESTALS are designed for installation in treatment plants and pump stations to allow operation of valves at a lower elevation.

Pedestals can be adapted for various custom requirements such as mounting of electric motor operators, manual gear operators, or customer-supplied components. Also available in fabricated stainless steel or carbon steel in various heights.

Pedestal Dimensions



Pedestal Base Dimensions



**DUCTILE IRON
CASTING**
for added
strength

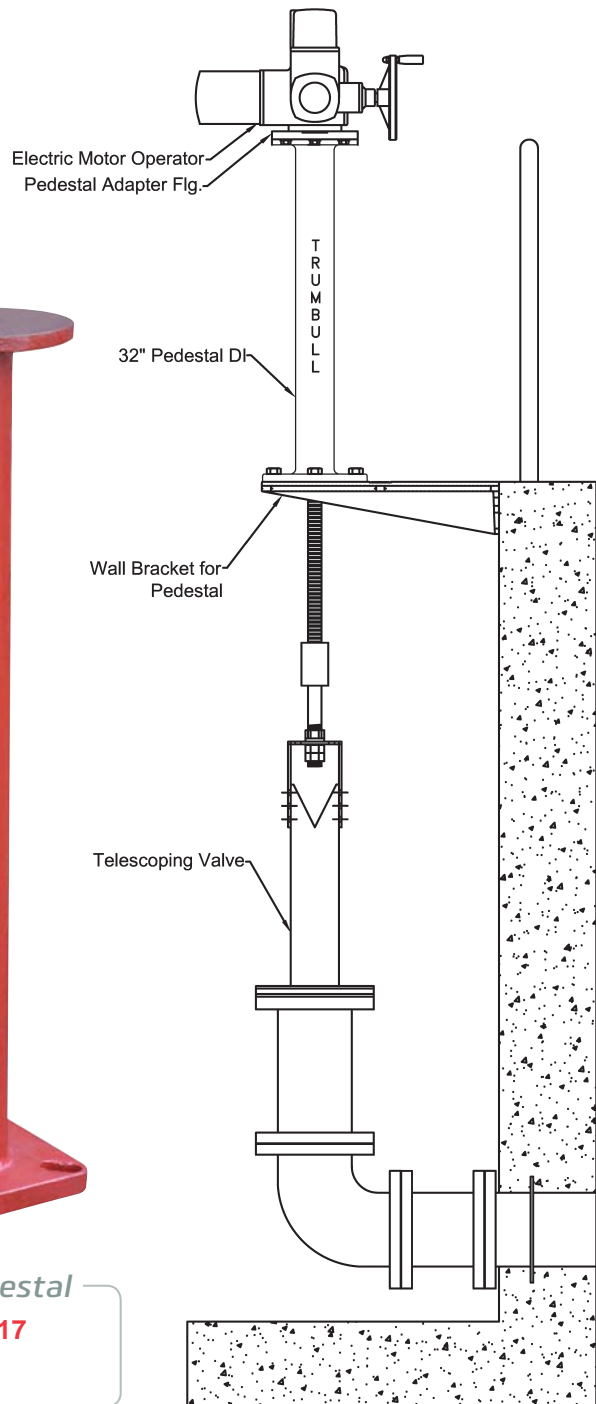
**2-PART
EPOXY
COATING**
Themec
140-1211

**SLOTTED
BOLT HOLES**
provide adjustability
to avoid interference
with rebar

32" Ductile Iron Pedestal

Item number: **367-2417**

Weight: 41.30 lbs.



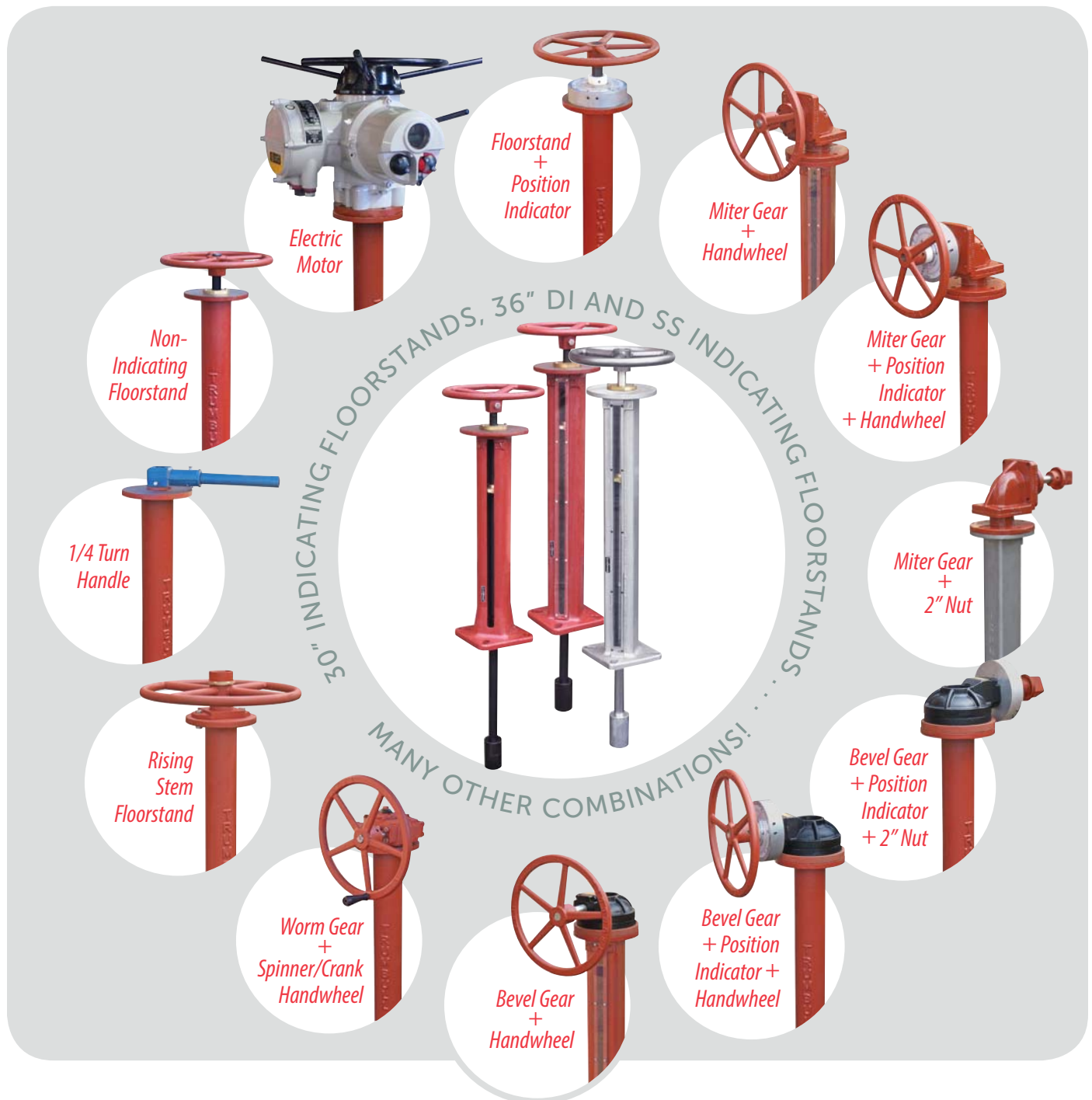
Typical installation

TRUMBULL

TRUMBULL INDUSTRIES, INC.

Phone: 330.799.3333 | 1040 N. Meridian Rd.
Toll Free: 800.677.1799 | P.O. Box 1556
Fax: 330.797.3215 | Youngstown, Ohio 44501

www.trumbull-mfg.com



FLOORSTAND OPTIONS

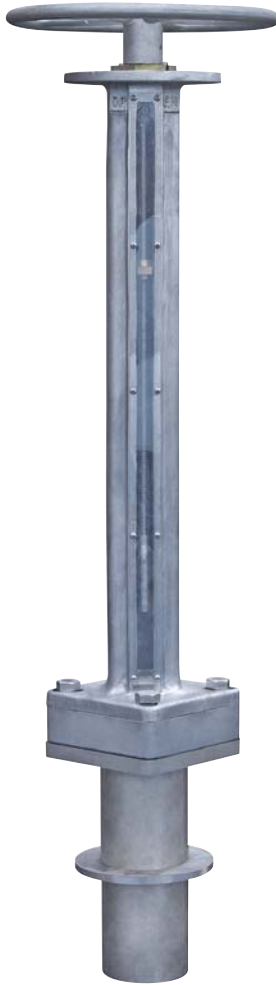
These are just a **FEW** of the possible options to fit
your specific **FLOORSTAND/PEDESTAL APPLICATIONS!**

CUSTOM FLOORSTAND APPLICATIONS



BENCH STAND

*For rising stem valves.
Keeps threads out of tank.*



SEALED ASSEMBLY

*For use with hazardous gasses.
Variety of sealing materials
are available.*



LIMIT SWITCHES

For remote operation.

CUSTOM STEM THREADING

30" FLOORSTANDS

...operate valves ranging from 140 turns up to 563 turns.

36" FLOORSTANDS

...operate valves ranging from 196 turns up to 784 turns.



FLOORSTAND ACCESSORIES



WALL BRACKETS



ADAPTER FLANGES



**THRUST BEARING
ASSEMBLY**



PADLOCK ADAPTER



HANDWHEELS