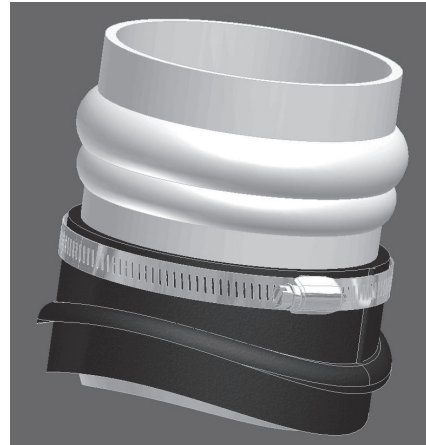


INSERTA TEE FITTINGS

Price List: PLF-IT-Vol. 6

Effective Date: April 1, 2026



Western Canada

19402 54 Avenue

Surrey, BC V3S 7H9

T: 604-531-8408 / 1-877-531-8478

F: 604-531-8468 / 1-877-531-8468

info@pro-linefittings.com

Eastern Canada

740 Huronia Road, Unit #17

Barrie, Ontario L4N 6C6

T: 705-733-7720 / 1-855-733-7720

F: 705-733-7710 / 1-855-733-7710

sales@pro-linefittings.com

Contents;

◆ INSERTA TEE ® Sewer	1
◆ INSERTA TEE ® Kor-Flo	2
◆ INSERTA TEE ® Ultra	3
◆ INSERTA TEE ® Hole Saws	4
◆ Wet Diamond Bits for Concrete & Clay	4
◆ Installation Manual	5-6



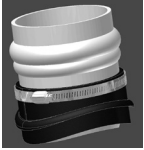
CSA B 181.0-06, CSA B 182.1-06, CSA B 182.2-06, CSA B 182.4-06
ASTM D3034, ASTM D3212, ASTM F1336, ASTM F679, ASTM F794.

At Pro-Line we're committed to **CUSTOMER SERVICE EXCELLENCE**.
This means quick quotes, the highest quality fittings, delivered as promised each and every time.

PRO-LINE FITTINGS

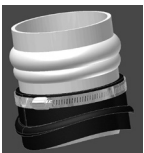
SEWER INSERTA TEE FITTINGS ®

4" INSERTA TEE ®
FATBOY
SEWER x G



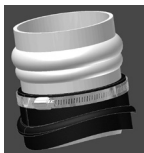
Inches	MM	Product Code	List Price
08x04	200x100	15AA0408GFB	198.34
10/12x04	250/300x100	15AA041012GFB	198.34
15/18x04	375/450x100	15AA041518GFB	198.34
21/24x04	525/600x100	15AA042124GFB	198.34
27x04	675/50x100	15AA042730GFB	198.34
36x04	900x100	15AA0436GFB	198.34
42x04	1050x100	15AA0442GFB	P.O.R.
48x04	1200x100	15AA0448GFB	P.O.R.

6" INSERTA TEE ®
FATBOY
SEWER x G



08x06	200x150	15AA0608GFB	234.08
10/12x06	250/300x150	15AA061012GFB	234.08
15/18x06	375/450x150	15AA061518GFB	234.08
21/24x06	525/600x150	15AA062124GFB	234.08
27x06	675/750x150	15AA062730GFB	234.08
36x06	900x150	15AA0636GFB	234.08
42x06	1050x150	15AA0642GFB	P.O.R.

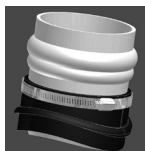
8" INSERTA TEE ®
SEWER x G



12x08	300x200	15AA0812G	424.16
15x08	375x200	15AA0815G	424.16
18x08	450x200	15AA0818G	424.16
21x08	525x200	15AA0821G	424.16
24x08	600x200	15AA0824G	424.16
27X08	675x200	15AA0827G	424.16
30X08	750x200	15AA0830G	424.16
36X08	900x200	15AA0836G	424.16

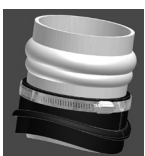
KOR-FLO INSERTA TEE FITTINGS ®

4" INSERTA TEE ®
FATBOY
Kor-Flo x G



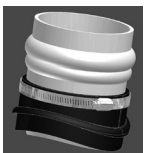
Inches	MM	Product Code	List Price
08x04	200x100	15AK0408GFB	P.O.R.
10x04	250x100	15AK0410GFB	P.O.R.
12x04	300x100	15AK0412GFB	P.O.R.
15x04	375x100	15AK0415GFB	P.O.R.
18x04	450x100	15AK0418GFB	P.O.R.
21x04	525x100	15AK0421GFB	P.O.R.
24x04	600x100	15AK0424GFB	P.O.R.
30x04	750x100	15AK0430GFB	P.O.R.
36x04	900x100	15AK0436GFB	P.O.R.

6" INSERTA TEE ®
FATBOY
Kor-Flo x G



08x06	200x150	15AU0608GFB	P.O.R.
10x06	250x150	15AK0610GFB	P.O.R.
12x06	300x150	15AK0612GFB	P.O.R.
15x06	375x150	15AK0615GFB	P.O.R.
18x06	450x150	15AK0618GFB	P.O.R.
21x06	525x150	15AK0621GFB	P.O.R.
24x06	600x150	15AK0624GFB	P.O.R.
30x06	750x150	15AK0630GFB	P.O.R.
36x06	900x150	15AK0636GFB	P.O.R.

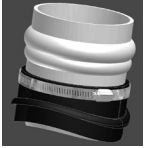
8" INSERTA TEE ®
Kor-Flo x G



10x08	250x200	15AK0810G	P.O.R.
12x08	300x200	15AK0812G	P.O.R.
15x08	375x200	15AK0815G	P.O.R.
18x08	450x200	15AK0818G	P.O.R.
21x08	525x200	15AK0821G	P.O.R.
24x08	600x200	15AK0824G	P.O.R.
30x08	750x200	15AK0830G	P.O.R.
36x08	900x200	15AK0836G	P.O.R.

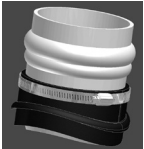
ULTRA RIB INSERTA TEE FITTINGS ®

4" INSERTA TEE ®
FATBOY
Ultra-Rib x G



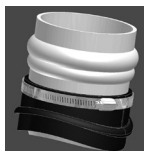
Inches	MM	Product Code	List Price
08x04	200x100	15AU0408GFB	P.O.R.
10x04	250x100	15AU0410GFB	198.34
12x04	300x100	15AU0412GFB	198.34
15x04	375x100	15AU0415GFB	198.34
18x04	450x100	15AU0418GFB	198.34
21x04	525x100	15AU0421GFB	198.34
24x04	600x100	15AU0424GFB	198.34
30x04	750x100	15AU0430GFB	P.O.R.
36x04	900x100	15AU0436GFB	P.O.R.

6" INSERTA TEE ®
FATBOY
Ultra-Rib x G



08x06	200x150	15AU0608GFB	234.08
10x06	250x150	15AU0610GFB	234.08
12x06	300x150	15AU0612GFB	234.08
15x06	375x150	15AU0615GFB	234.08
18x06	450x150	15AU0618GFB	234.08
21x06	525x150	15AU0621GFB	234.08
24x06	600x150	15AU0624GFB	234.08
30x06	750x150	15AU0630GFB	P.O.R.
36x06	900x150	15AU0636GFB	P.O.R.

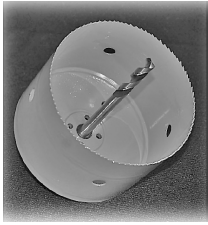
8" INSERTA TEE ®
Ultra-Rib x G



12x08	300x200	15AU0812G	502.13
15x08	375x200	15AU0815G	502.13
18x08	450x200	15AU0818G	502.13
21x08	525x200	15AU0821G	502.13
24x08	600x200	15AU0824G	502.13
30x08	750x200	15AU0830G	P.O.R.
36x08	900x200	15AU0836G	P.O.R.

INSERTA TEE FITTINGS ®

Hole Saws
Red Series

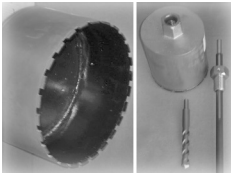


Hole Saws - Red Series (Deep)

3/8" Pilot, good for all plastic pipes including SWR DR35, Kor-Flo, Ultra Rib, and Corrugated PE 4 1/2" deep so it can core very thick walled pipes.

Size	Product Code	List Price
Holesaw 4 1/4" C/W Arbor	15UHOLSAW04	412.78
Holesaw 6 1/2" C/W Arbor	15UHOLSAW06	591.48
Holesaw 8 3/4" C/W Arbor	15UHOLSAW08	770.18
Holesaw 10 7/8" C/W Arbor	15XHOLSAW10	P.O.R.

Wet
Diamond Bits

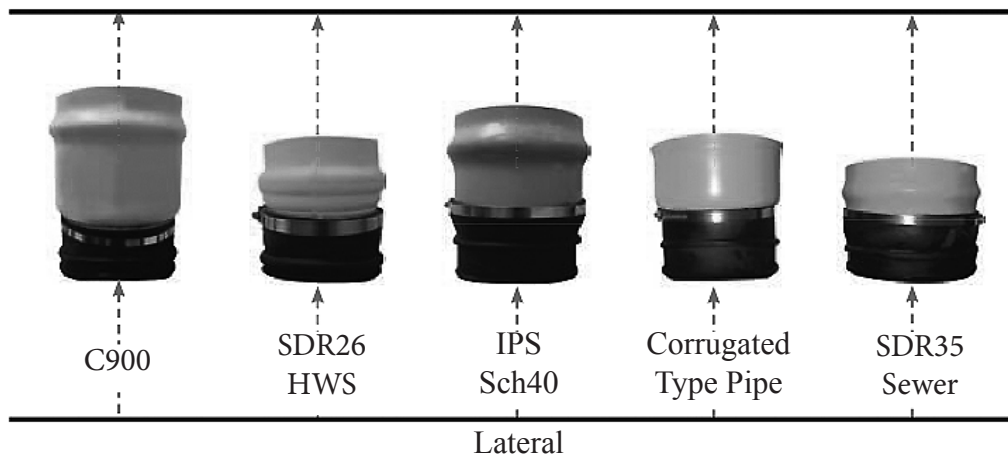


Wet Diamond Bits for Concrete & Clay

4 1/4" to 10 7/8" Bits including 3/4" masonry bit and an arbor if needed. The arbor allows the coring without a coring machine, not supplied for 12 7/8" bits and larger as a coring machine is required P&D on request.

Size	Product Code	List Price
Holesaw 4 1/2" Conc C/W Arbor	15XHOLSAW04CON	505.52
Holesaw 6 1/2" Conc C/W Arbor	15XHOLSAW06CON	653.48
Holesaw 8 3/4" Conc C/W Arbor	15XHOLSAW08CON	900.09
Holesaw 10 7/8" Conc C/W Arbor	15XHOLSAW10CON	3205.84
Holesaw 12 7/8" Conc C/W Arbor	15XHOLSAW12CON	P.O.R.
Holesaw 15 13/16" Conc C/W Arbor	15XHOLSAW15CON	P.O.R.

Any Mainline or Structure



INSERTA TEE FITTINGS ® INSTALLATION PROCEDURES



STEP 1

Make sure bit is perpendicular to mainline. Core the proper size hole. Feel inside hole and clear any remaining material.



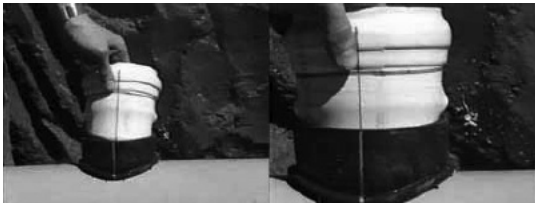
STEP 2

Insert the rubber sleeve into the cored hole with the GOLD VERTICAL LINE ON THE SLEEVE facing to the side of the mainline. The upper segment should be on top of the wall or rib and the lower segment (PVC Ribbed & Polyethylene pipe only) should be on the inside of the pipe. Feel inside to be sure lower segment is flat against inside wall.



STEP 3

Apply the Inserta Tee solution supplied, to the inside of the rubber sleeve and to the outside of the PVC hub adapter's spigot. **WARNING:** Using pipe lube may result in hub adapter popping out.



STEP 4

Place the PVC hub adapter into the rubber sleeve, Make sure that the RED VERTICAL LINE ON THE PVC HUB ADAPTER IS IN LINE WITH THE GOLD VERTICAL LINE ON THE RUBBER SLEEVE. Push hub adapter in as far as possible by hand. Make sure hub adapter is perpendicular to mainline. Forcing hub adapter through at an angle may cause damage to the rubber sleeve or hub adapter.

INSERTA TEE FITTINGS ® INSTALLATION PROCEDURE



STEP 5
Place the 2x4 board onto the top of the PVC hub adapter



STEP 6
The RED HORIZONTAL LINE AT THE TOP OF THE HUB ADAPTER is a depth mark. This tells the installer just how far to drive the adapter into the rubber sleeve. Using the board and hammer drive the PVC hub adapter into the rubber sleeve to where the HORIZONTAL RED LINE ON THE PVC HUB ADAPTER MEETS THE TOP OF THE RUBBER SLEEVE.



STEP 7
Place the stainless steel band around the top of the rubber sleeve and tighten down.



STEP 8
Install side service pipe in normal manner.



Terms and Conditions of Sale

1. General

All sales are subject to Pro-Line's Fittings Inc. and Pro-Line Fittings East Inc. ("Vendor") general terms and conditions as posted on the Vendor's website at the time of sale. The Purchaser's order is accepted subject to the Vendor's terms and condition and any other terms and conditions agreed to in writing by the Vendor and Purchaser. It is agreed that any terms and conditions contained in the Purchaser's order or otherwise stipulated will be deemed for the Purchaser's internal use only and will not be binding on the Vendor.

2. Orders

Purchase orders received are conditional upon satisfactory credit approval by the Vendor. Once confirmed by the Vendor orders for custom-made products manufactured by the Purchaser's specifications and orders of large quantities for non-inventoried products cannot be canceled, modified or returned without the Vendor's written consent and upon terms which provide for indemnification of the Vendor for costs and expenses incurred.

3. Shipments

Delivery schedules stipulated in either the Vendor's "Sales Quote" or the "Sales Order Confirmation" are approximate only and shipments will be made within reasonable proximity thereto. All shipments are F.O.B Vendor's location unless otherwise agreed to in writing between the Vendor and Purchaser. The Vendor may agree to different shipping terms as specified in the Sales Quote or in the Sales Order Confirmation. Freight prepaid orders, when applicable will be delivered by the carrier of the Vendor's selection, unless the use of another carrier is agreed to in writing with the Purchaser.

Prepaid orders will be delivered based on the most economical route as determined by the Vendor. If the Purchaser requests partial shipment of a Prepaid Order, the Vendor will only Prepay the initial shipment, all further partial shipments on that order are shipped at the Purchaser's expense. If the Purchaser requires another means of delivery that offered by the Vendor, the Purchaser agrees to incur the additional cost. Each Sales Order maybe shipped in whole or in part at the Vendor's discretion. The Vendor shall bear no liability for Products lost or damaged during transit. Under no circumstances will the Vendor be responsible for any damage whatsoever caused by delays in shipment. The Purchaser must verify quantities and report discrepancies within 3 business days of receipt. The Vendor reserves the right to optimize packaging at its discretion. Some products may only be available in bulk package multiples or case quantities. The Vendor's Delivery Schedules stated on the "Sales Quote" or "Sales Order Confirmation" are only reasonable approximate of the shipping date to the Purchaser.

4. Prices

All prices published or quoted are subject to change without notice until orders are accepted by the Vendor and issuance of a Sales Confirmation, whereupon prices will remain firm for those shipments within thirty (30) days following the day of the Vendor's Sales Order Confirmation. For specific contracts or projects, the Vendor may agree to in writing to protect the prices for an extended period of time. To remove a charge for applicable taxes, the Purchaser must provide the Vendor with tax exemption certificates or any documents as required by a specific tax jurisdiction.

5. Payment Terms

Payment is based on the delivery date of the products and is due by the fifteenth (15th) of the following month. If applicable, cash discounts, expressed as a percentage, are calculated on the net invoiced price, before taxes, freight, or other charges and can only be deducted from the payment if the Vendor received payment from the Purchaser on or prior to the due date, otherwise no cash discount is applicable. Overdue accounts shall bear interest at rate of 18% per annum. The granting of credit by the Vendor is based on an evaluation of the Purchaser's financial condition. If the financial condition does not justify continuance on credit, the Vendor may require full or partial advance payment.

6. Return of Products

The Vendor may accept the return of Products, subject to the following terms and conditions: 1) Prior to the return of any Products, the Purchaser must obtain a Return Goods Authorization (RGA) number from the Vendor, 2) All Products must be returned freight prepaid, unless otherwise authorized by the Vendor, 3) Products must be received in good saleable condition. A minimum return or re-stocking charge of 25% of the purchase price will be applied against the credit issued pursuant to the returned Products, except in the case of the Vendor's shipping error.

7. Warranty and Limitations of Liability

All the Vendor's Products are guaranteed against defects resulting from faulty workmanship or materials, subject to limitations, exceptions, disclaimers and conditions stipulated hereunder or specified with respect to particular Products and posted or amended on the Vendor's website of literature. The Vendor will replace free of charge, including shipping charges for the replacement of any Products which are found to be defective in workmanship or material provided that the following conditions are met.

- a.** The Vendor is promptly notified in writing of such a defect immediately upon discovery and the defective Products is promptly returned to the Vendor. The Claimant must provide documentation of evidence of failure, as well as the failed product that has alleged to have failed and agree to in section of the defective Product by the Vendor.
- b.** The Product has not been altered or modified after leaving the Vendor's premises, has not been used in more than one installation, show no evidence of tampering or disassembly, not subject to abnormal operating conditions, abuse or misuse.
- c.** The Products have been used in applications or under conditions that are in not accordance with the technical information available from the Vendor.
- d.** The Vendor disclaims any liability or responsibility for labour, materials and or other expenses to replace the defective Product or to repair and damage resulting from the use there of; for Purchaser's calculations, product design or engineering specifications; for the accuracy of any plans, drawing or specifications furnished to the purchaser as part of the sale of any of its products.

8. Force Majeure Clause

Force majeure clause "is meant to protect the Vendor and the Purchaser in the event that a contract cannot be performed due to causes which are outside the control of the parties and could not be avoided by exercise of due care." Force majeure clauses allocate risk between the parties when an unanticipated event makes performance impossible or impracticable.

If and to the extent that a Vendor's performance of any of its obligations pursuant to a "Quote", "Sales Order" or Sales Order Confirmation" is prevented, hindered or delayed directly or indirectly by fire, flood, earthquake, elements of nature or acts of God, acts of war, terrorism, riots, civil disorders, rebellions or revolutions, or any other similar cause beyond the reasonable control of the Vendor (each a "Force Majeure Event"), and such non-performance, hindrance or delay could not have been prevented by reasonable precautions, then the non-performing, hindered or delayed by the Vendor, shall be excused for such non-performance, hindrance or delay, as applicable, of those obligations affected (the "Affected Services or Products") by the Force Majeure Event for as long as the Force Majeure Event continues and, except as otherwise provided in this Section, such Vendor continues to use its commercially reasonable efforts to recommence performance whenever and to whatever extent possible without delay, including through the use of alternate sources, workaround plans or other means. The Vendor, whose performance is prevented, hindered or delayed by a Force Majeure Event shall promptly notify the other Party of the occurrence of the Force Majeure Event and describe in reasonable detail the nature of the Force Majeure Event.



CONTACT US:

WESTERN CANADA

19402 54 Avenue
Surrey, BC V3S 7H9
T: 604-531-8408 / 877-531-8478
F: 604-531-8468 / 877-531-8468
info@pro-linefittings.com

EASTERN CANADA

740 Huronia Road, Unit #17
Barrie, ON L4N 6C6
T: 705-733-7720 / 855-733-7720
F: 705-733-7710 / 855-733-7710
sales@pro-linefittings.com



Consult Our Infrastructure & Industrial Solutions Brochure



pro-linefittings.com